



Benham & Reeves

Kingwood House, Chaucer Gardens, E1

£900 per week, £3,900 per month + fees

 2 Bedrooms  2 Bathrooms  Furnished

A stunning, spacious apartment, with outside space, situated within a prestigious development, with outstanding onsite amenities, in Aldgate. Located minutes from Aldgate East, and a short walk from Tower Gateway DLR for access into Canary Wharf.

Please [click here](#) for full detail

Property features

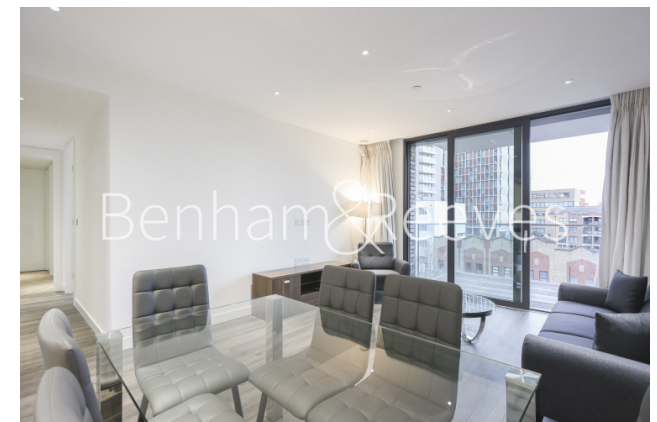
Luxury Two Bedroom Apartment | Bespoke Bathroom | Superfast Broadband Connection Available | Integrated Heating & Cooling System | Private South Facing Balcony | EPC-B | 24 Hour Concierge Service | Residents Lounge with Reading Area | Resident Gym and swimming Pool | Near Tower Hill Underground Station, Tower Gateway DLR

For more information about this property,
please call our Wapping branch on

020 7680 8900

Redress & Client Money Protection :

Benham and Reeves are members of The Property Ombudsman redress scheme and have Client Money protection with ARLA Propertymark. You can find more information on our website at <https://www.benhams.com/membership/>



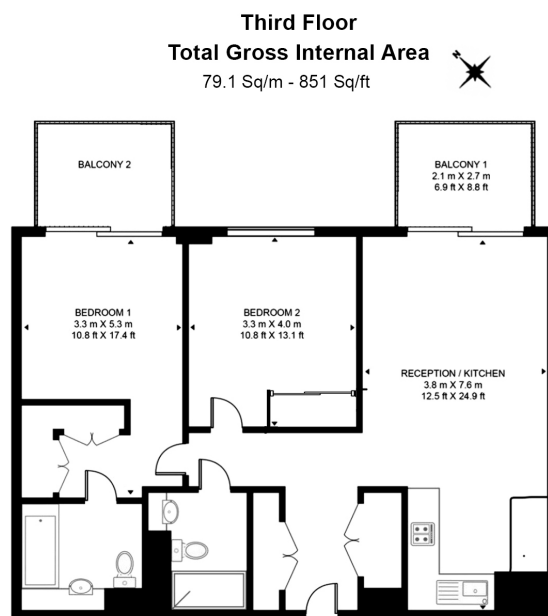
Benham&Reeves



Kingwood House, Chaucer Gardens, E1

£900 per week, £3,900 per month + fees

www.benhams.com



Floor Plan measurements are approximate and are for illustrative purposes only. While we do not doubt the floor plans accuracy, we make no guarantee, warranty or representation as to the accuracy and completeness of the floor plan.

Score	Energy rating	Current	Potential
92+	A		
81-91	B	87 B	87 B
69-80	C		
55-68	D		
39-54	E		
21-38	F		
1-20	G		

London branches open six days a week Mon - Sat

Canary Wharf | City | Colindale | Dartmouth Park | Ealing | Fulham
 Hammersmith | Hampstead | Highgate | Hyde Park | Kensington | Kew
 Knightsbridge | Nine Elms | Shoreditch | Southall | Surrey Quays
 Wapping | Wembley | White City | Woolwich

International offices

China | Hong Kong SAR | India | Indonesia | Qatar | Malaysia | Middle East |
 Singapore | South Africa | Thailand | Turkey



Benham & Reeves