



Benham & Reeves

Casson Square, Southbank Place, SE1

£1,150 per week, £4,983 per month + fees

 2 Bedrooms  2 Bathrooms  Furnished

Spacious luxury apartment, with high security, situated within a desirable luxurious development with a wide range of extravagant Resident facilities. Excellent transport with Waterloo Station onsite (Northern Line, Bakerloo Line, Jubilee Line, Waterloo & City line, and mainline trains).

Please [click here](#) for full detail

Property features

Luxury 2 Bedroom Apartment | Bespoke Bathroom & En-Suite | Open Plan Living Space | Fitted Kitchen | Furnished | EPC-B | Wooden Flooring Throughout | 24-Hour Concierge & Residents' Facilities | Nearby Waterloo Station

For more information about this property,
please call our City branch on

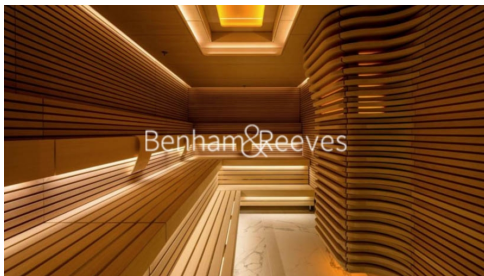
020 7213 9700

Redress & Client Money Protection :

Benham and Reeves are members of The Property Ombudsman redress scheme and have Client Money protection with ARLA Propertymark. You can find more information on our website at <https://www.benhams.com/membership/>



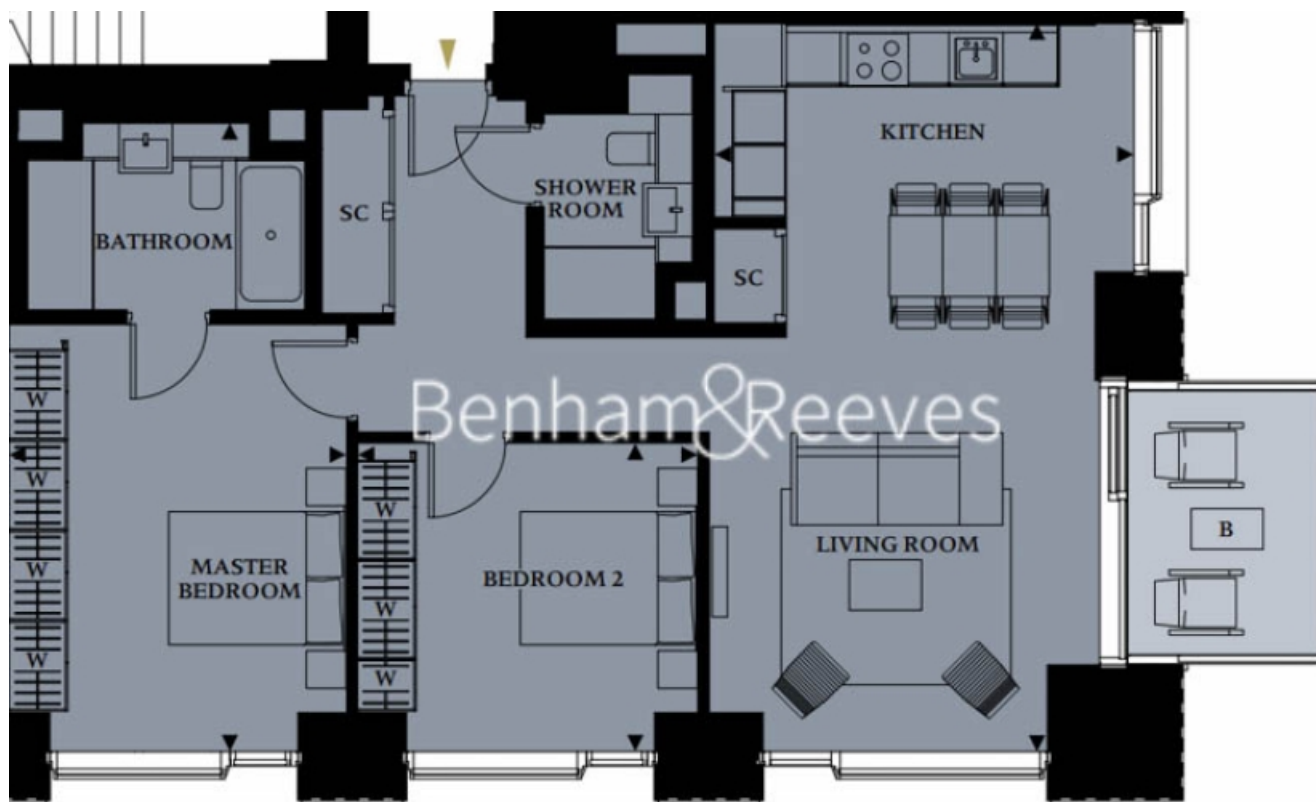
Benham & Reeves



Casson Square, Southbank Place, SE1

£1,150 per week, £4,983 per month + fees

www.benhams.com



Energy Efficiency Rating		
	Current	Potential
Very energy efficient - lower running costs		
(92+) A		
(81-91) B	84	84
(69-80) C		
(55-68) D		
(39-54) E		
(21-38) F		
(1-20) G		
Not energy efficient - higher running costs		
England, Scotland & Wales	EU Directive 2002/91/EC	

London branches open six days a week Mon - Sat

Canary Wharf | City | Colindale | Dartmouth Park | Ealing | Fulham
Hammersmith | Hampstead | Highgate | Hyde Park | Kensington | Kew
Knightsbridge | Nine Elms | Shoreditch | Southall | Surrey Quays
Wapping | Wembley | White City | Woolwich

International offices

China | Hong Kong SAR | India | Israel | Malaysia | Middle East | Pakistan
Qatar | Singapore | South Africa | Thailand | Turkey



Benham & Reeves