



Benham & Reeves

Kings Tower, Chelsea Creek, SW6

£692 per week, £3,000 per month + fees

🛏 1 Bedroom 🚿 1 Bathroom 🛋
Furnished/UnFurnished

Modern 14th floor apartment situated in a stunning luxury Riverside development a short walk from fashionable King's Road and Fulham Broadway. Positioned close to Imperial Wharf Overground Station and Chelsea Harbour Pier.

Please [click here](#) for full detail

Property features

1 Bedroom 1 Bathroom 567 sq ft | Private Balcony with a River View / 14th Floor | Neutral Decoration Throughout | Fully Fitted Kitchen Integrated with Well-Known Appliances | 24 Hr Concierge / 24 Hr Security | Communal Gardens | EPC-B | Luxurious Modern Bathrooms | Air Ventilation / Underfloor Heating / Air Conditioning | 0.1 Miles to Imperial Wharf station

For more information about this property,
please call our Fulham branch on

020 7348 7620

Redress & Client Money Protection :

Benham and Reeves are members of The Property Ombudsman redress scheme and have Client Money protection with ARLA Propertymark. You can find more information on our website at <https://www.benhams.com/membership/>



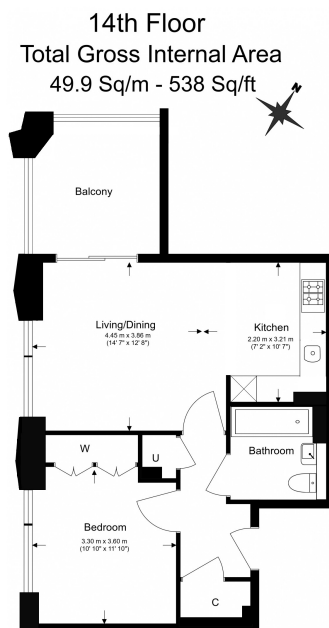
Benham & Reeves



Kings Tower, Chelsea Creek, SW6

£692 per week, £3,000 per month + fees

www.benhams.com



Floor Plan measurements are approximate and are for illustrative purposes only. While we do not doubt the floor plans accuracy, we make no guarantee, warranty or representation as to the accuracy and completeness of the floor plan.

Score	Energy rating	Current	Potential
92+	A		
81-91	B	84 B	84 B
69-80	C		
55-68	D		
39-54	E		
21-38	F		
1-20	G		

London branches open six days a week Mon - Sat

Canary Wharf | City | Colindale | Dartmouth Park | Ealing | Fulham
Hammersmith | Hampstead | Highgate | Hyde Park | Kensington | Kew
Knightsbridge | Nine Elms | Shoreditch | Southall | Surrey Quays
Wapping | Wembley | White City | Woolwich

International offices

China | Hong Kong SAR | India | Indonesia | Qatar | Malaysia | Middle East |
Singapore | South Africa | Thailand | Turkey



Benham & Reeves