



Benham & Reeves

**Carlyle Court, Chelsea Harbour, SW10**

£704 per week, £3,050 per month + fees

 2 Bedrooms    2 Bathrooms    Furnished

**\*\*Parking included\*\*** This immaculate home is situated in an exclusive development alongside the River Thames. Well located within walking distance from Imperial Wharf Overground Station.

Please [click here](#) for full detail

## Property features

**2 Double Bedroom Apartment with Built-in Wardrobe | Fully Fitted Kitchen Integrated with Well-Known Appliance | Air Ventilation / Underfloor Heating / Air Conditioning | Parking | 24 Hr Concierge / 24 Hr Security / Communal Gardens | EPC - E | Short walk into Chelsea | Furnished to a high standard | 892 Sq Ft | Short walk from Imperial Wharf station**

For more information about this property,  
please call our Property Management branch on

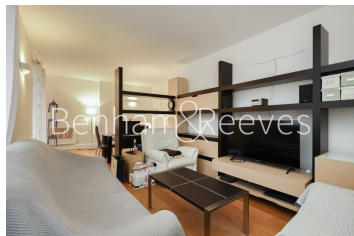
**020 7319 9740**

Redress & Client Money Protection :

Benham and Reeves are members of The Property Ombudsman redress scheme and have Client Money protection with ARLA Propertymark. You can find more information on our website at <https://www.benham.com/membership/>



Benham & Reeves



# Carlyle Court, Chelsea Harbour, SW10

£704 per week, £3,050 per month + fees

[www.benhams.com](http://www.benhams.com)

Score	Energy rating	Current	Potential
92+	A		
81-91	B		
69-80	C		
55-68	D		
39-54	E	42 E	44 E
21-38	F		
1-20	G		

## London branches open six days a week Mon - Sat

Canary Wharf | City | Colindale | Dartmouth Park | Ealing | Fulham  
Hammersmith | Hampstead | Highgate | Hyde Park | Kensington | Kew  
Knightsbridge | Nine Elms | Shoreditch | Southall | Surrey Quays  
Wapping | Wembley | White City | Woolwich

## International offices

China | Hong Kong SAR | India | Indonesia | Qatar | Malaysia | Middle East |  
Singapore | South Africa | Thailand | Turkey

