



Benham & Reeves

28 Coleherne Road, Chelsea, SW10

£690 per week, £2,990 per month + fees



 2 Bedrooms  1 Bathroom  Furnished

A charming & attractive 548 sq ft TWO-BEDROOM apartment situated in a converted period building amidst an elegant row of houses in Chelsea's COLEHERNE ROAD within easy access of West Brompton, Earl's Court, South Kensington & the Kings Road. Offered furnished, the property benefits from high ceilings and wood flooring throughout. A true 'city charmer'.

Please [click here](#) for full detail

Property features

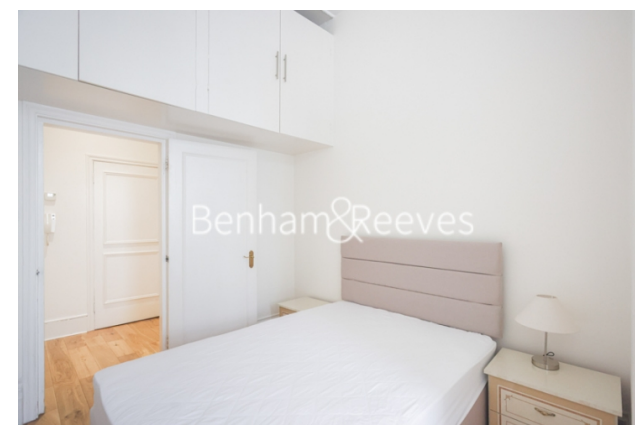
2 Bedrooms | 1 Bathroom | Open Plan Reception | Fully Fitted Kitchen | High Ceilings | EPC-B | 1st Floor | Close proximity to amenities including bars & restaurants | Near West Brompton and Earl's Court Station

For more information about this property, please call our Knightsbridge branch on

020 7581 2112

Redress & Client Money Protection :

Benham and Reeves are members of The Property Ombudsman redress scheme and have Client Money protection with ARLA Propertymark. You can find more information on our website at <https://www.benhamandreeves.com/membership/>



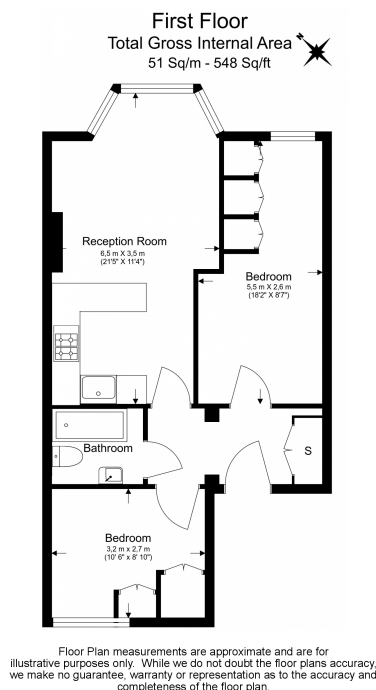
Benham & Reeves



28 Coleherne Road, Chelsea, SW10

£690 per week, £2,990 per month + fees

www.benhams.com



Score	Energy rating	Current	Potential
92+	A		
81-91	B		
69-80	C		77 C
55-68	D	68 D	
39-54	E		
21-38	F		
1-20	G		

London branches open six days a week Mon - Sat

Canary Wharf | City | Colindale | Dartmouth Park | Ealing | Fulham
Hammersmith | Hampstead | Highgate | Hyde Park | Kensington | Kew
Knightsbridge | Nine Elms | Shoreditch | Southall | Surrey Quays
Wapping | Wembley | White City | Woolwich

International offices

China | Hong Kong SAR | India | Indonesia | Qatar | Malaysia | Middle East | Pakistan
Singapore | South Africa | Thailand | Turkey



Benham & Reeves