



Benham & Reeves

Coleridge Gardens, Chelsea, SW10

£595 per week, £2,578 per month + fees

🛏 1 Bedroom 🚿 1 Bathroom 🛋 Furnished

A superb 538 sq ft ONE-BEDROOM apartment situated in the highly-desired KINGS CHELSEA development. Residents benefit from 24 Hr Concierge, Fitness Suite, Swimming Pool and Tennis Court. Secure Parking by separate negotiations.

Please [click here](#) for full detail

Property features

Prestigious Chelsea Development | 24 Hr Concierge | Fitness Suite | Swimming Pool | Tennis Court | EPC-C | Parking by Separate Negotiation | Communal Gardens | Fulham Broadway Station | Earls Court Tube Station

For more information about this property,
please call our Knightsbridge branch on

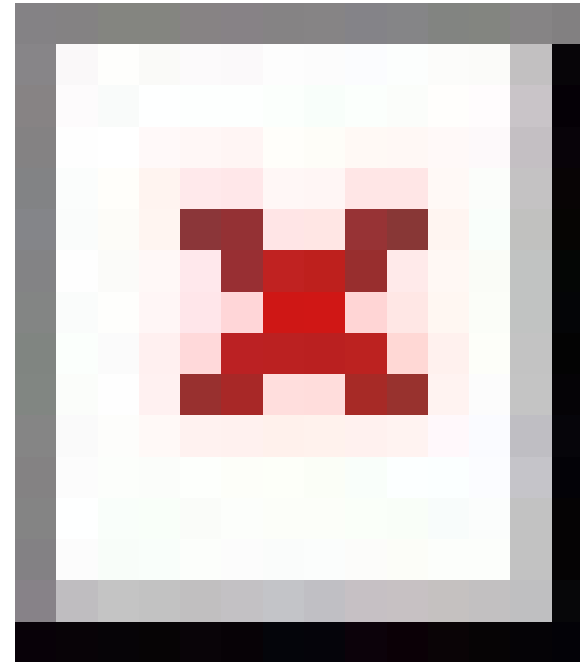
020 7581 2112



Redress & Client Money Protection :

Benham and Reeves are members of The Property Ombudsman redress scheme and have Client Money protection with ARLA Propertymark. You can find more information on our website at <https://www.benhams.com/membership/>

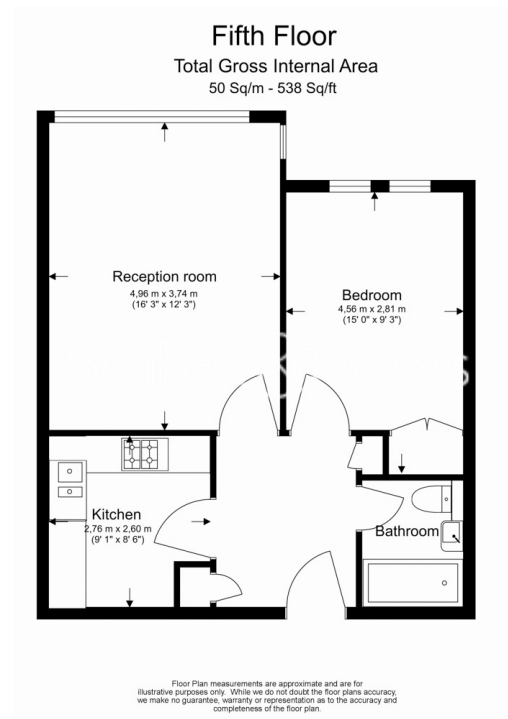
Benham & Reeves



Coleridge Gardens, Chelsea, SW10

£595 per week, £2,578 per month + fees

www.benhams.com



Score	Energy rating	Current	Potential
92+	A		
81-91	B		
69-80	C	71 c	73 c
55-68	D		
39-54	E		
21-38	F		
1-20	G		

London branches open six days a week Mon - Sat

Canary Wharf | City | Colindale | Dartmouth Park | Ealing | Fulham
Hammersmith | Hampstead | Highgate | Hyde Park | Kensington | Kew
Knightsbridge | Nine Elms | Shoreditch | Southall | Surrey Quays
Wapping | Wembley | White City | Woolwich

International offices

China | Hong Kong SAR | India | Israel | Malaysia | Middle East | Pakistan
Qatar | Singapore | South Africa | Thailand | Turkey

