



Benham & Reeves

Grosvenor Waterside, Chelsea, SW1W

£735 per week, £3,185 per month + fees

 1 Bedroom  1 Bathroom  Furnished

A smartly-presented 548 sq ft ONE-BEDROOM apartment with private BALCONY in fashionable GROSVENOR WATERSIDE on the Chelsea Embankment. Residents benefit from fantastic amenities such as 24-Hr Concierge, a luxury Health Club & Spa, on-site Coffee Shop & Sainsbury's Local.

Please [click here](#) for full detail

Property features

Private Balcony | Exclusive Development | 548 Sq Ft | 24 Hr Concierge | On-Site Coffee Shop | EPC-B | On-Site Sainsburys | Luxury Health Club | Close To Battersea Park | 5 Minutes To Sloane Square & 8 Minutes To Victoria Station

For more information about this property, please call our Knightsbridge branch on

020 7581 2112

Redress & Client Money Protection :

Benham and Reeves are members of The Property Ombudsman redress scheme and have Client Money protection with ARLA Propertymark. You can find more information on our website at <https://www.benhams.com/membership/>



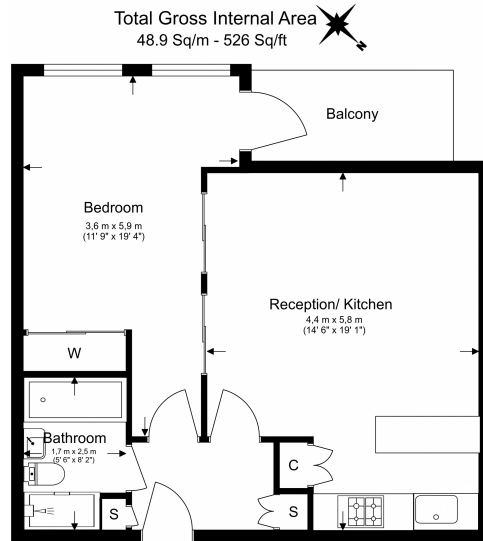
Benham & Reeves



Grosvenor Waterside, Chelsea, SW1W

£735 per week, £3,185 per month + fees

www.benhams.com



Floor Plan measurements are approximate and are for illustrative purposes only. While we do not doubt the floor plans accuracy, we make no guarantee, warranty or representation as to the accuracy and completeness of the floor plan.

Score	Energy rating	Current	Potential
92+	A		
81-91	B	85 B	85 B
69-80	C		
55-68	D		
39-54	E		
21-38	F		
1-20	G		

London branches open six days a week Mon - Sat

Canary Wharf | City | Colindale | Dartmouth Park | Ealing | Fulham
Hammersmith | Hampstead | Highgate | Hyde Park | Kensington | Kew
Knightsbridge | Nine Elms | Shoreditch | Southall | Surrey Quays
Wapping | Wembley | White City | Woolwich

International offices

China | Hong Kong SAR | India | Indonesia | Qatar | Malaysia | Middle East |
Singapore | South Africa | Thailand | Turkey



Benham & Reeves