



Benham & Reeves

Tarnbrook Court, Belgravia, SW1W

£1,650 per week, £7,150 per month + fees

 3 Bedrooms  2 Bathrooms  Furnished

A modern & luxurious 1,238 sq ft THREE-BEDROOM apartment with lift access on the 1st Floor of TARNBROOK COURT which is conveniently-located within minutes of fashionable SLOANE SQUARE in Belgravia. This stunning property offers a grand lifestyle enhanced by Porter services and parking by separate negotiation.

Please [click here](#) for full detail

Property features

3 Bedrooms | 3 Bathrooms | Modern Refurbished | Live-in caretaker | Separate Kitchen | EPC-C | 1,238 SQ FT | Close To Shops And Restaurants | Large Reception/Dining Room | Nearby Sloane Square Underground Station

For more information about this property,
please call our Knightsbridge branch on

020 7581 2112

Redress & Client Money Protection :

Benham and Reeves are members of The Property Ombudsman redress scheme and have Client Money protection with ARLA Propertymark. You can find more information on our website at <https://www.benhams.com/membership/>



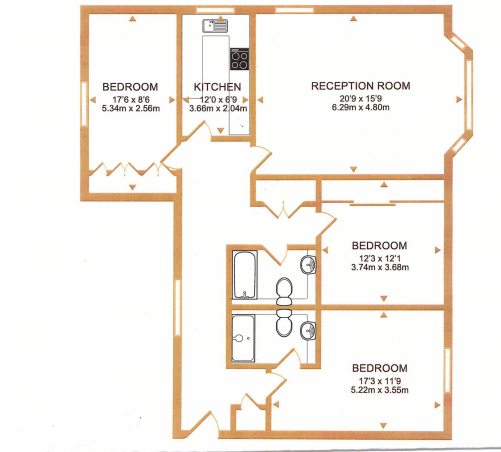
Benham & Reeves



Tarnbrook Court, Belgravia, SW1W

£1,650 per week, £7,150 per month + fees

www.benhams.com



Score	Energy rating	Current	Potential
92+	A		
81-91	B		84 B
69-80	C	76 C	
55-68	D		
39-54	E		
21-38	F		
1-20	G		

London branches open six days a week Mon - Sat

Canary Wharf | City | Colindale | Dartmouth Park | Ealing | Fulham
Hammersmith | Hampstead | Highgate | Hyde Park | Kensington | Kew
Knightsbridge | Nine Elms | Shoreditch | Southall | Surrey Quays
Wapping | Wembley | White City | Woolwich

International offices

China | Hong Kong SAR | India | Israel | Malaysia | Middle East | Pakistan
Qatar | Singapore | South Africa | Thailand | Turkey

