



Benham & Reeves

Chelsea Manor Court, Chelsea, SW3

£825 per week, £3,575 per month + fees

 3 Bedrooms  3 Bathrooms  Furnished

A well-presented 751 sq ft THREE-BEDROOM DUPLEX apartment with PRIVATE TERRACE in an immaculately-maintained development on Chelsea's MANOR STREET just moments from the KINGS ROAD in the heart of CHELSEA.

Please [click here](#) for full detail

Property features

Separate Fitted Kitchen | Furnished | Ample Storage | Dark Wood Flooring Throughout | Duplex Apartment | EPC-C | 751 Sq Ft | Patio | Close To Shops And Restaurants | Walking Distance To Sloane Square Station

For more information about this property,
please call our Property Management branch on

020 7319 9740

Redress & Client Money Protection :

Benham and Reeves are members of The Property Ombudsman redress scheme and have Client Money protection with ARLA Propertymark. You can find more information on our website at <https://www.benhamandreeves.com/membership/>



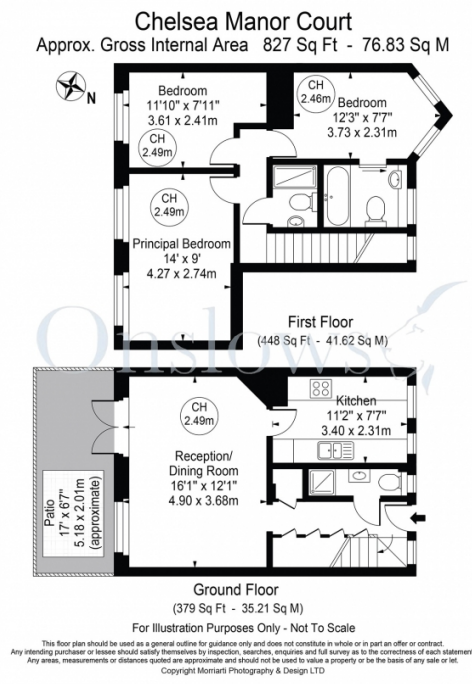
Benham & Reeves



Chelsea Manor Court, Chelsea, SW3

£825 per week, £3,575 per month + fees

www.benhams.com



Score	Energy rating	Current	Potential
92+	A		
81-91	B		
69-80	C	71 c	75 c
55-68	D		
39-54	E		
21-38	F		
1-20	G		

London branches open six days a week Mon - Sat

Canary Wharf | City | Colindale | Dartmouth Park | Ealing | Fulham
Hammersmith | Hampstead | Highgate | Hyde Park | Kensington | Kew
Knightsbridge | Nine Elms | Shoreditch | Southall | Surrey Quays
Wapping | Wembley | White City | Woolwich

International offices

China | Hong Kong SAR | India | Indonesia | Qatar | Malaysia | Middle East |
Singapore | South Africa | Thailand | Turkey

