



Benham & Reeves

## **Crown Lodge, Chelsea, SW3**

£825 per week, £3,575 per month + fees

 2 Bedrooms    2 Bathrooms    Part-furnished

A well-presented 840 sq ft TWO-BEDROOM apartment in the highly desirable CROWN LODGE development in CHELSEA. Residents benefit from 24 Hr CONCIERGE, stunning GARDENS with Fish Ponds, SWIMMING POOL & FITNESS SUITE. Underground PARKING SPACE included.

Please [click here](#) for full detail

## Property features

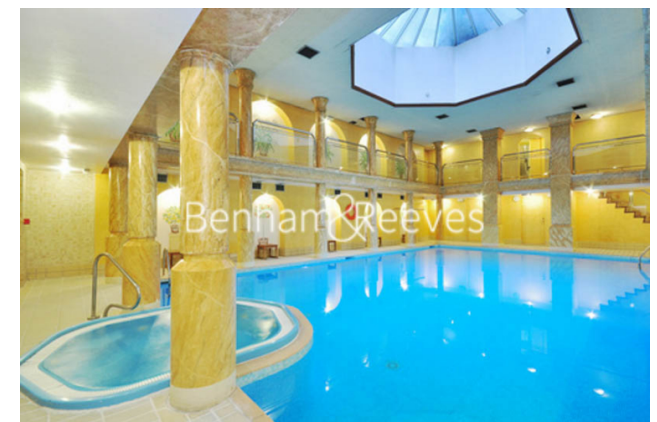
**2 Bedrooms | 2 Bathrooms | 24 Hr Concierge | Swimming Pool | Secure Parking Space | EPC-C | Un-Furnished | 10 Minutes to Harrods | Nearby the King's Road | South Kensington Underground Station**

For more information about this property,  
please call our Knightsbridge branch on

**020 7581 2112**

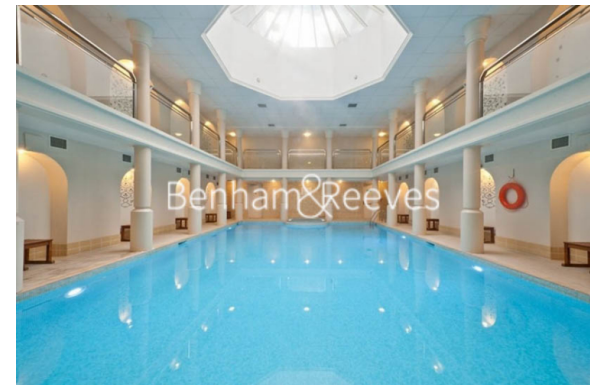
Redress & Client Money Protection :

Benham and Reeves are members of The Property Ombudsman redress scheme and have Client Money protection with ARLA Propertymark. You can find more information on our website at <https://www.benhamandreeves.com/membership/>



**Benham & Reeves**





# Crown Lodge, Chelsea, SW3

£825 per week, £3,575 per month + fees

www.benhams.com

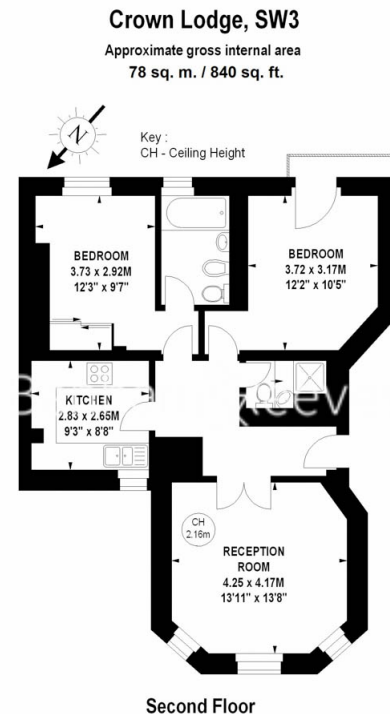
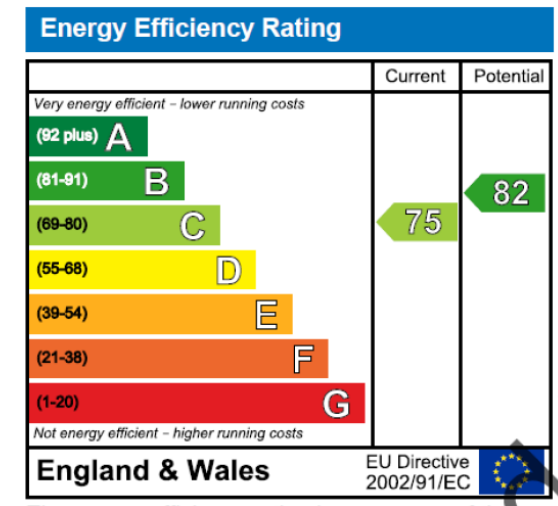


Illustration For Identification Purposes Only. Not To Scale



## London branches open six days a week Mon - Sat

Canary Wharf | City | Colindale | Dartmouth Park | Ealing | Fulham  
Hammersmith | Hampstead | Highgate | Hyde Park | Kensington | Kew  
Knightsbridge | Nine Elms | Shoreditch | Southall | Surrey Quays  
Wapping | Wembley | White City | Woolwich

## International offices

China | Hong Kong SAR | India | Israel | Malaysia | Middle East | Pakistan  
Qatar | Singapore | South Africa | Thailand | Turkey



Benham & Reeves