



Benham & Reeves

301 Brompton Road, Chelsea, SW3

£650 per week, £2,817 per month + fees

🛏 1 Bedroom 🚿 1 Bathroom 🛋 Furnished

An urban-chic 570 sq ft ONE-BEDROOM apartment overlooking the BROMPTON ROAD opposite Myrtos. This spacious flat features wood floors throughout. Brompton Road enjoys a prime position near Walton Street, The King's Road & KNIGHTSBRIDGE.

Please [click here](#) for full detail

Property features

Bedroom | Bathroom | Reception | Separate Kitchen | Furnished | EPC-E | 570 sq ft | 1st Floor | 5 Minutes to Knightsbridge | South Kensington Station

For more information about this property,
please call our Knightsbridge branch on

020 7581 2112

Redress & Client Money Protection :

Benham and Reeves are members of The Property Ombudsman redress scheme and have Client Money protection with ARLA Propertymark. You can find more information on our website at <https://www.benhamandreeves.com/membership/>



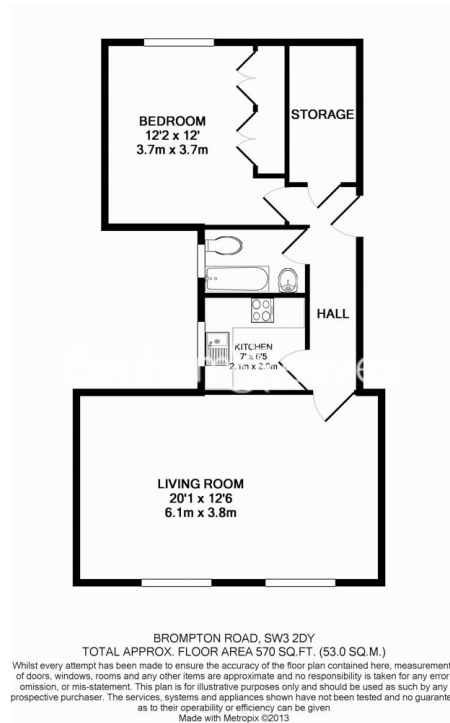
Benham & Reeves



301 Brompton Road, Chelsea, SW3

£650 per week, £2,817 per month + fees

www.benhams.com



Score	Energy rating	Current	Potential
92+	A		
81-91	B		
69-80	C		
55-68	D		58 D
39-54	E	46 E	
21-38	F		
1-20	G		

London branches open six days a week Mon - Sat

Canary Wharf | City | Colindale | Dartmouth Park | Ealing | Fulham
Hammersmith | Hampstead | Highgate | Hyde Park | Kensington | Kew
Knightsbridge | Nine Elms | Shoreditch | Southall | Surrey Quays
Wapping | Wembley | White City | Woolwich

International offices

China | Hong Kong SAR | India | Indonesia | Qatar | Malaysia | Middle East | Pakistan
Singapore | South Africa | Thailand | Turkey

