



Benham & Reeves

Sloane Avenue Mansions, Chelsea, SW3

£550 per week, £2,383 per month + fees

 1 Bedroom  1 Bathroom  Furnished

A beautifully-designed & well-appointed 421 sq ft ONE-BEDROOM apartment with southwest-facing BALCONY in SLOANE AVENUE MANSIONS in the heart of CHELSEA. Residents benefit from 24 Hr Concierge & a fabulous location within minutes of the famous King's Road & Sloane Square. Rent includes Hot Water & Heating.

Please [click here](#) for full detail

Property features

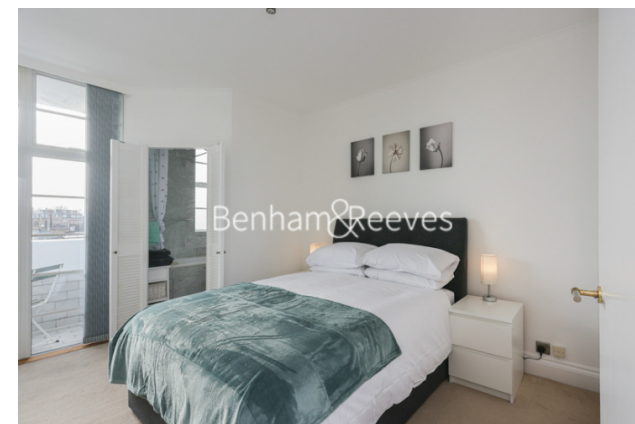
1 Bedroom | Hot Water & Heating Included | 421 sq ft | 24 Hr Concierge | Balcony | EPC-TBC | Furnished | Close to Shops | Sloane Square Station | South Kensington Station

For more information about this property,
please call our Property Management branch on

020 7319 9740

Redress & Client Money Protection :

Benham and Reeves are members of The Property Ombudsman redress scheme and have Client Money protection with ARLA Propertymark. You can find more information on our website at <https://www.benhamandreeves.com/membership/>



Benham & Reeves

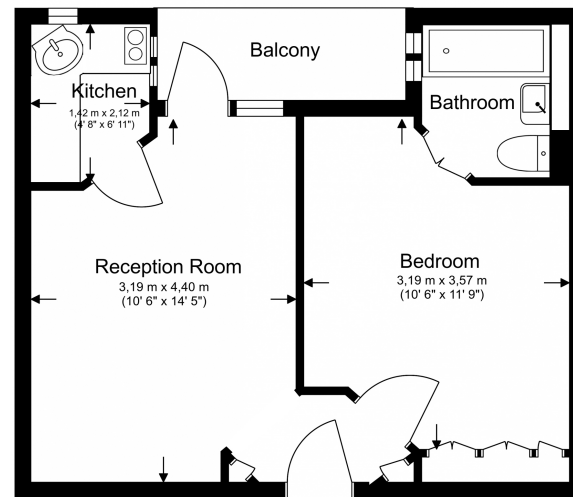


Sloane Avenue Mansions, Chelsea, SW3

£550 per week, £2,383 per month + fees

www.benhams.com

Third Floor
Total Gross Internal Area
31.77 Sq/m - 342 Sq/ft



Floor Plan measurements are approximate and are for illustrative purposes only. While we do not doubt the floor plans accuracy, we make no guarantee, warranty or representation as to the accuracy and completeness of the floor plan.

London branches open six days a week Mon - Sat

Canary Wharf | City | Colindale | Dartmouth Park | Ealing | Fulham
Hammersmith | Hampstead | Highgate | Hyde Park | Kensington | Kew
Knightsbridge | Nine Elms | Shoreditch | Southall | Surrey Quays
Wapping | Wembley | White City | Woolwich

International offices

China | Hong Kong SAR | India | Indonesia | Qatar | Malaysia | Middle East |
Singapore | South Africa | Thailand | Turkey



Benham & Reeves