



Benham & Reeves

St. Catherine's Mews, Chelsea, SW3

£2,700 per week, £11,700 per month + fees

 4 Bedrooms  3 Bathrooms  Furnished

A modern 1,607 sq ft FOUR-BEDROOM Mews House - with internal lift, roof terrace & single car garage - in the charming ST. CATHERINE'S MEWS located off Milner Street in the heart of Chelsea.
SHORT LET ONLY.

Please [click here](#) for full detail

Property features

4 Bedrooms | 3 Bathrooms | 1,607 sq ft | Reception | Garage | EPC-D | Furnished | Internal Lift | Roof Terrace | South Kensington Station

For more information about this property,
please call our Knightsbridge branch on

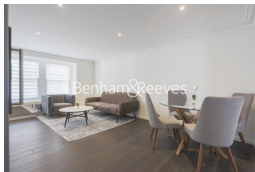
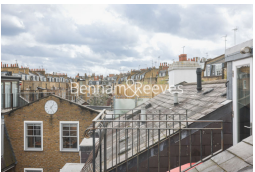
020 7581 2112

Redress & Client Money Protection :

Benham and Reeves are members of The Property Ombudsman redress scheme and have Client Money protection with ARLA Propertymark.
You can find more information on our website at <https://www.benhams.com/membership/>



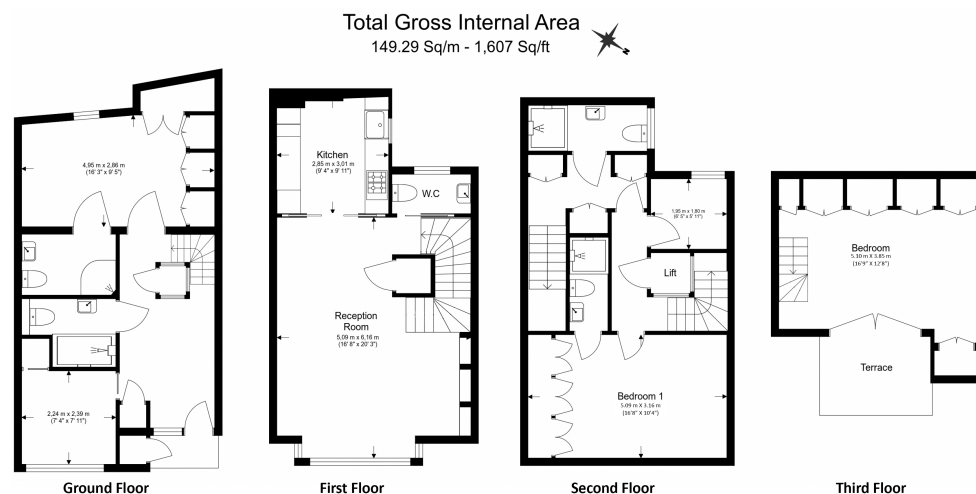
Benham&Reeves



St. Catherine's Mews, Chelsea, SW3

£2,700 per week, £11,700 per month + fees

www.benhams.com



Floor Plan measurements are approximate and are for illustrative purposes only. While we do not doubt the floor plans accuracy, we make no guarantee, warranty or representation as to the accuracy and completeness of the floor plan.

Score	Energy rating	Current	Potential
92+	A		
81-91	B		83 B
69-80	C		
55-68	D	66 D	
39-54	E		
21-38	F		
1-20	G		

London branches open six days a week Mon - Sat

Canary Wharf | City | Colindale | Dartmouth Park | Ealing | Fulham
Hammersmith | Hampstead | Highgate | Hyde Park | Kensington | Kew
Knightsbridge | Nine Elms | Shoreditch | Southall | Surrey Quays
Wapping | Wembley | White City | Woolwich

International offices

China | Hong Kong SAR | India | Indonesia | Qatar | Malaysia | Middle East |
Singapore | South Africa | Thailand | Turkey



Benham & Reeves