



Benham & Reeves

## Manresa Road, Chelsea, SW3

£3,750 per week, £16,250 per month + fees

 4 Bedrooms    4 Bathrooms    Unfurnished

A spectacular 2,648 sq ft FOUR-BEDROOM family home in MANRESA ROAD with a private patio GARDEN & GARAGE located in the heart of CHELSEA, just minutes from the King's Road.

Please [click here](#) for full detail

## Property features

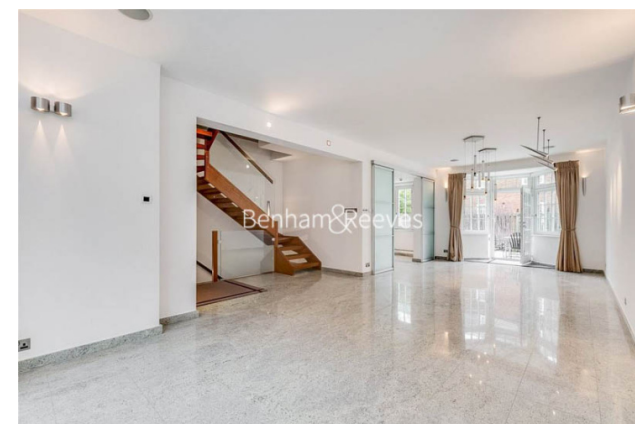
**4-Bed Family Home | Private Garage | Patio Garden | Sauna & 2nd Living Quarter | 2,648 sq ft | EPC-C | Unfurnished | Roof Terrace | EPC-C | Prime Chelsea location**

For more information about this property, please call our Knightsbridge branch on

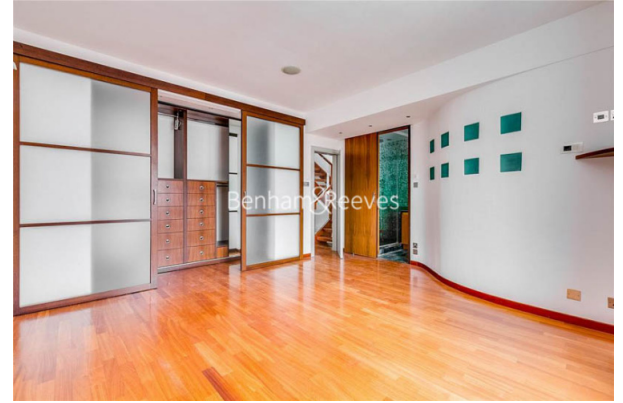
**020 7581 2112**

Redress & Client Money Protection :

Benham and Reeves are members of The Property Ombudsman redress scheme and have Client Money protection with ARLA Propertymark. You can find more information on our website at <https://www.benhams.com/membership/>



Benham & Reeves



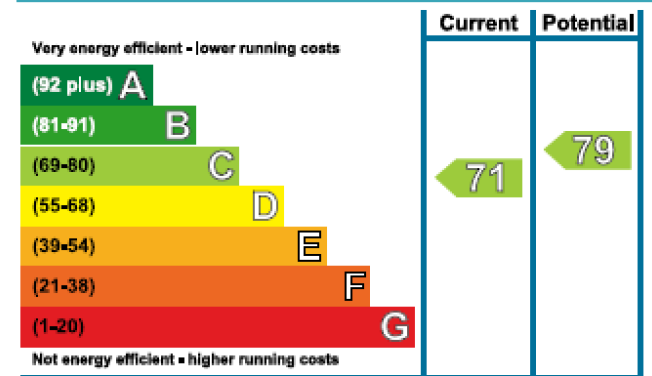
# Manresa Road, Chelsea, SW3

£3,750 per week, £16,250 per month + fees

www.benhams.com



## Energy Efficiency Rating



## London branches open six days a week Mon - Sat

Canary Wharf | City | Colindale | Dartmouth Park | Ealing | Fulham  
 Hammersmith | Hampstead | Highgate | Hyde Park | Kensington | Kew  
 Knightsbridge | Nine Elms | Shoreditch | Southall | Surrey Quays  
 Wapping | Wembley | White City | Woolwich

## International offices

China | Hong Kong SAR | India | Indonesia | Qatar | Malaysia | Middle East |  
 Singapore | South Africa | Thailand | Turkey

