



Benham & Reeves

Principal Tower, City, EC2A

£1,038 per week, £4,500 per month + fees

 2 Bedrooms  2 Bathrooms  Furnished

Luxury dual aspect apartment with incredible unrestricted views over The City, situated, in an exciting development, with luxury resident facilities, located a short walk from Liverpool Street Station and Shoreditch High Street Station.

Please [click here](#) for full detail

Property features

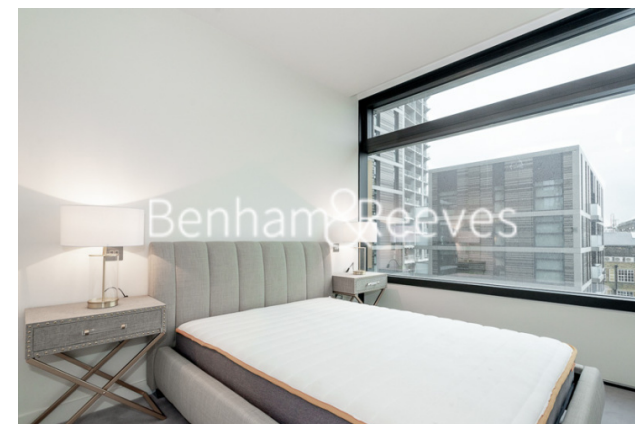
2 Bedroom Apartment | Bespoke bathroom & En-suite Shower Room | Open Plan Living Space with Floor to Ceiling Windows | Kitchen integrated with Miele appliances | Furnished | EPC-B | Dedicated 24-hour Concierge | Swimming pool, sauna, spa, gym & private lounge and bar | Walking distance from Shoreditch | Excellent Transport links Nearby

For more information about this property,
please call our Property Management branch on

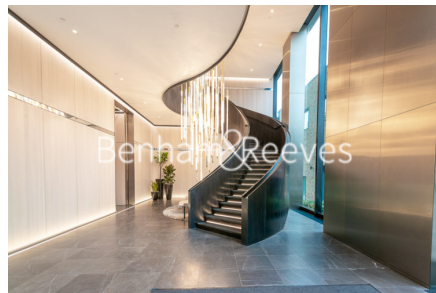
020 7319 9740

Redress & Client Money Protection :

Benham and Reeves are members of The Property Ombudsman redress scheme and have Client Money protection with ARLA Propertymark. You can find more information on our website at <https://www.benhams.com/membership/>



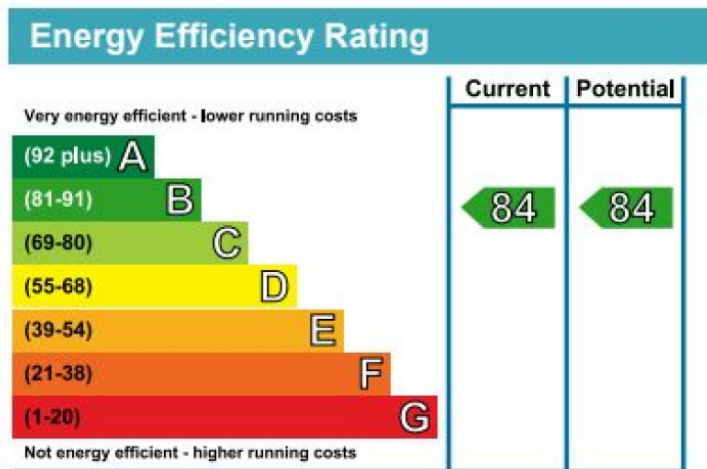
Benham & Reeves



Principal Tower, City, EC2A

£1,038 per week, £4,500 per month + fees

www.benhams.com



London branches open six days a week Mon - Sat

Canary Wharf | City | Colindale | Dartmouth Park | Ealing | Fulham
Hammersmith | Hampstead | Highgate | Hyde Park | Kensington | Kew
Knightsbridge | Nine Elms | Shoreditch | Southall | Surrey Quays
Wapping | Wembley | White City | Woolwich

International offices

China | Hong Kong SAR | India | Indonesia | Qatar | Malaysia | Middle East |
Singapore | South Africa | Thailand | Turkey

