



Benham & Reeves

## **Principal Tower, City, EC2A**

£1,039 per week, £4,502 per month + fees

 2 Bedrooms    2 Bathrooms    Furnished

Luxury, dual aspect 3rd floor apartment situated in an Iconic development in Shoreditch moments from The City and a brief walk from both Liverpool Street Station and Shoreditch High Street Station.

Please [click here](#) for full detail

## Property features

**2 Bedroom Apartment | Bespoke bathroom & En-suite Shower Room | Open Plan Living Space with Floor to Ceiling Windows | Kitchen integrated with Miele appliances | Furnished | EPC-B | Walking distance from Shoreditch | Dedicated 24-hour Concierge, swimming pool, sauna, spa, gym | Excellent Transport links Nearby | Shoreditch High Street Station**

For more information about this property,  
please call our City branch on

**020 7213 9700**

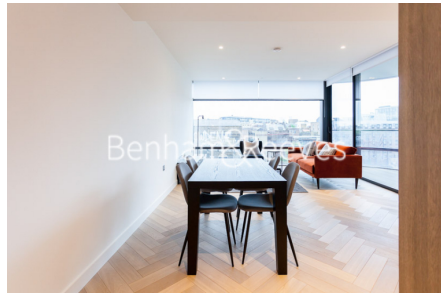
Redress & Client Money Protection :

Benham and Reeves are members of The Property Ombudsman redress scheme and have Client Money protection with ARLA Propertymark. You can find more information on our website at <https://www.benhams.com/membership/>



Benham & Reeves

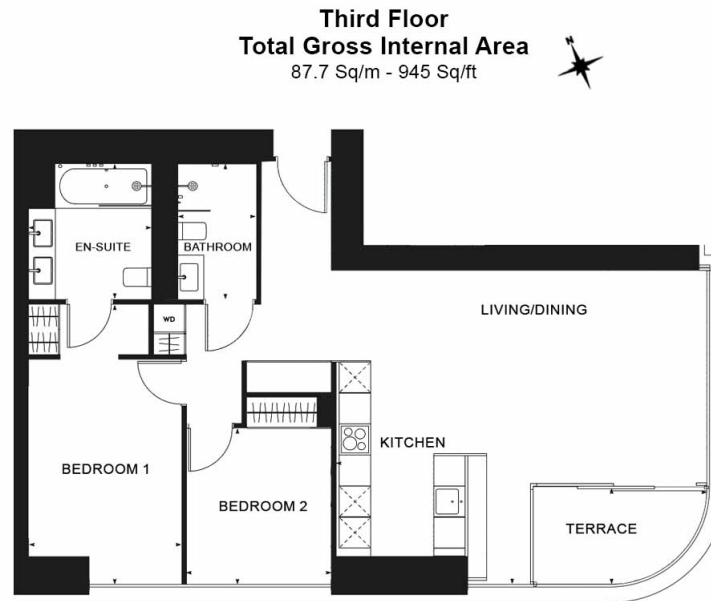




# Principal Tower, City, EC2A

£1,039 per week, £4,502 per month + fees

[www.benhams.com](http://www.benhams.com)



Floor Plan measurements are approximate and are for illustrative purposes only. While we do not doubt the floor plans accuracy, we make no guarantee, warranty or representation as to the accuracy and completeness of the floor plan.

## London branches open six days a week Mon - Sat

Canary Wharf | City | Colindale | Dartmouth Park | Ealing | Fulham  
Hammersmith | Hampstead | Highgate | Hyde Park | Kensington | Kew  
Knightsbridge | Nine Elms | Shoreditch | Southall | Surrey Quays  
Wapping | Wembley | White City | Woolwich

## International offices

China | Hong Kong SAR | India | Indonesia | Qatar | Malaysia | Middle East | Pakistan  
Singapore | South Africa | Thailand | Turkey



Benham & Reeves