



Benham & Reeves

Principal Tower, City, EC2A

£1,150 per week, £4,983 per month + fees

 2 Bedrooms  2 Bathrooms  Unfurnished

Luxury 26th floor apartment situated in a landmark development with superb resident facilities a short walk from Liverpool Street Station, and Shoreditch High Street Station. Offered Unfurnished.

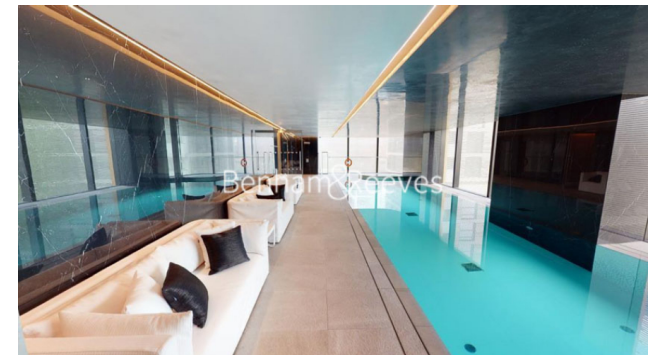
Please [click here](#) for full detail

Property features

Unfurnished 2 Bedroom Apartment | Bespoke bathroom & En-suite Shower Room | Open Plan Living Space with Floor to Ceiling Windows | Kitchen integrated with Miele appliances | Furnished | EPC-B | Dedicated 24-hour Concierge, swimming pool, sauna, spa, gym | Excellent Transport links Nearby | Walking distance to Shoreditch & Liverpool Street Station

For more information about this property,
please call our City branch on

020 7213 9700



Redress & Client Money Protection :

Benham and Reeves are members of The Property Ombudsman redress scheme and have Client Money protection with ARLA Propertymark. You can find more information on our website at <https://www.benhams.com/membership/>

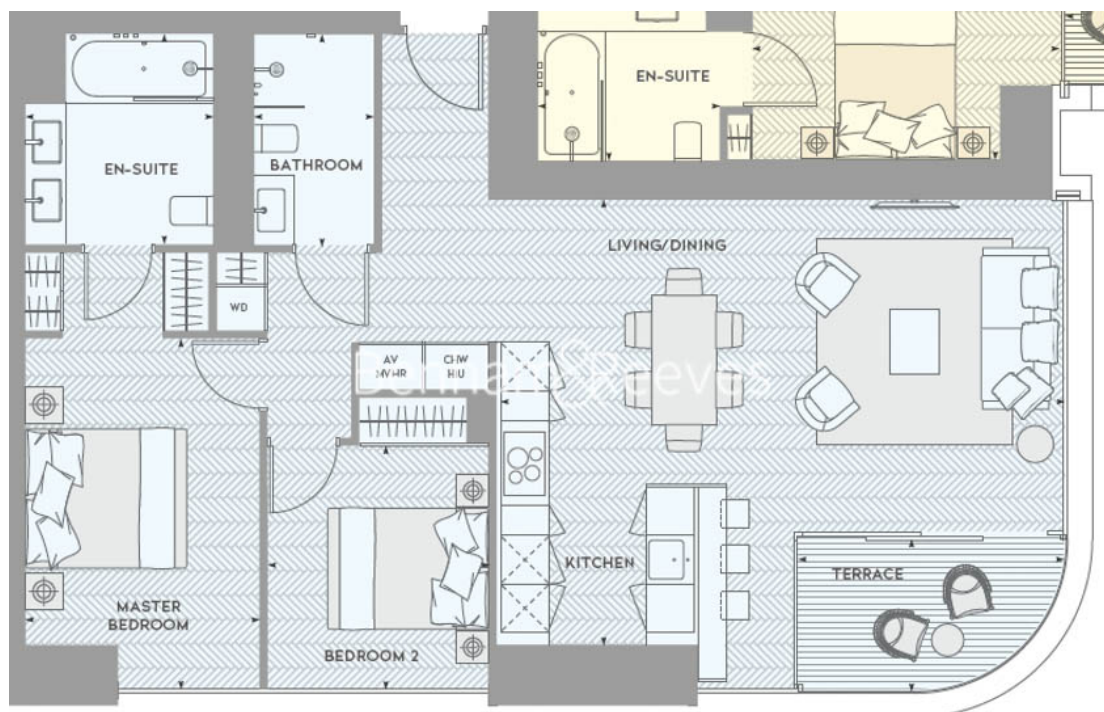
Benham & Reeves



Principal Tower, City, EC2A

£1,150 per week, £4,983 per month + fees

www.benhams.com



Score	Energy rating	Current	Potential
92+	A		
81-91	B	84 B	84 B
69-80	C		
55-68	D		
39-54	E		
21-38	F		
1-20	G		

London branches open six days a week Mon - Sat

Canary Wharf | City | Colindale | Dartmouth Park | Ealing | Fulham
Hammersmith | Hampstead | Highgate | Hyde Park | Kensington | Kew
Knightsbridge | Nine Elms | Shoreditch | Southall | Surrey Quays
Wapping | Wembley | White City | Woolwich

International offices

China | Hong Kong SAR | India | Indonesia | Qatar | Malaysia | Middle East | Pakistan
Singapore | South Africa | Thailand | Turkey

