



Benham & Reeves

One Bishopsgate Plaza, City, EC3A

£1,000 per week, £4,333 per month + fees

 1 Bedroom  1 Bathroom  Furnished

Stunning 21st floor, furnished apartment situated in Europe's first Pan Pacific hotel, offering residents access to its five-star amenities, designed by internationally renowned Yabu Pushelberg in the heart of The Square Mile. Liverpool Street Underground Station is a two-minute walk away, enabling fast connection to the Eurostar (11 mins), London City Airport (27 mins) and Heathrow (35 mins)

Please [click here](#) for full detail

Property features

Spacious 1 bedroom apartment | Bespoke bathroom | Open Plan Reception | Kitchen integrated with Miele appliances | Furnished | EPC-B | Dedicated 24-hour Concierge, swimming pool, sauna, spa, gym | Private lounge and terrace | Excellent Transport links Nearby | Walking distance from Liverpool Street Station

For more information about this property,
please call our City branch on

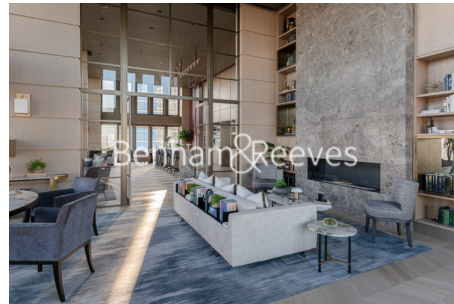
020 7213 9700

Redress & Client Money Protection :

Benham and Reeves are members of The Property Ombudsman redress scheme and have Client Money protection with ARLA Propertymark. You can find more information on our website at <https://www.benhams.com/membership/>



Benham & Reeves

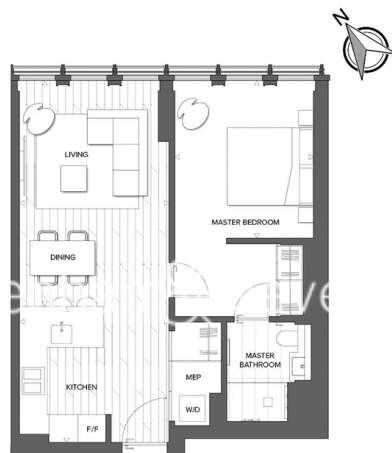


One Bishopsgate Plaza, City, EC3A

£1,000 per week, £4,333 per month + fees

www.benhams.com

21th Floor
Approx gross internal area: 601sq/ft - 55.8sq/m



Kitchen 3.5 x 3.2m / 11'5" x 10'4"
Living 5.2 x 3.5m / 17'2" x 11'5"
Master bedroom 3.7 x 3.2m / 12'0" x 10'7"

Whilst every attempt has been made to ensure the accuracy of the floor plan contained here, measurements of doors, windows, rooms and any other items are approximate and no responsibility is taken for any error, omission, or mis-statement. This plan is for illustrative purposes only and should be used as such by any prospective purchaser. The services, systems and appliances shown have not been tested and no guarantee as to their operability or efficiency can be given.
Made with Metropix ©2016

Score	Energy rating	Current	Potential
92+	A		
81-91	B	84 B	84 B
69-80	C		
55-68	D		
39-54	E		
21-38	F		
1-20	G		

London branches open six days a week Mon - Sat

Canary Wharf | City | Colindale | Dartmouth Park | Ealing | Fulham
Hammersmith | Hampstead | Highgate | Hyde Park | Kensington | Kew
Knightsbridge | Nine Elms | Shoreditch | Southall | Surrey Quays
Wapping | Wembley | White City | Woolwich

International offices

China | Hong Kong SAR | India | Indonesia | Qatar | Malaysia | Middle East |
Singapore | South Africa | Thailand | Turkey



Benham & Reeves