



Benham & Reeves

# Water Lane, City, EC3R

£831 per week, £3,600 per month + fees

 1 Bedroom     1 Bathroom     Furnished

Luxury apartment situated within a coveted development close to Tower Bridge, the City of London, Tower Hill (Circle and District Line), Tower Gateway (DLR) and Monument (Northern, Circle & District line).

Please [click here](#) for full detail

## Property features

**One Bedroom | Bespoke Bathroom | High Quality Finish Throughout | Fitted Kitchen with High End Appliances | Furnished | EPC-B | 24 Hour Concierge, Gym, Pool, Cinema | Private Balcony | Nearby Tower Hill and Monument Tube Stations**

For more information about this property,  
please call our City branch on

**020 7213 9700**

Redress & Client Money Protection :

Benham and Reeves are members of The Property Ombudsman redress scheme and have Client Money protection with ARLA Propertymark. You can find more information on our website at <https://www.benhams.com/membership/>



Benham&Reeves

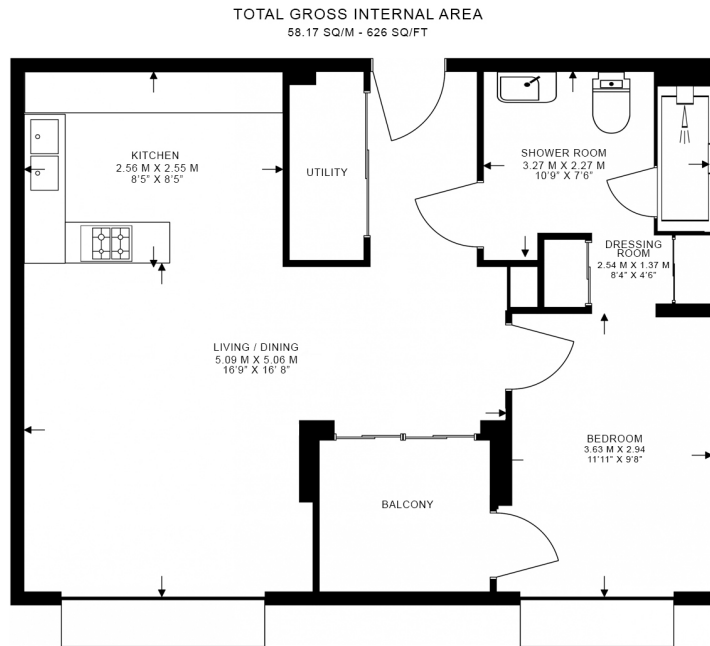




# Water Lane, City, EC3R

£831 per week, £3,600 per month + fees

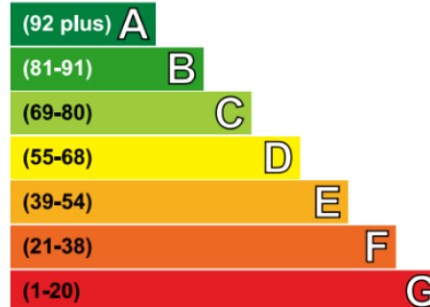
[www.benhams.com](http://www.benhams.com)



Floor Plan measurements are approximate and are for illustrative purposes only. While we do not doubt the floor plans accuracy, we make no guarantee, warranty or representation as to the accuracy and completeness of the floor plan.

## Energy Efficiency Rating

Very energy efficient - lower running costs



Not energy efficient - higher running costs

## London branches open six days a week Mon - Sat

Canary Wharf | City | Colindale | Dartmouth Park | Ealing | Fulham  
Hammersmith | Hampstead | Highgate | Hyde Park | Kensington | Kew  
Knightsbridge | Nine Elms | Shoreditch | Southall | Surrey Quays  
Wapping | Wembley | White City | Woolwich

## International offices

China | Hong Kong SAR | India | Indonesia | Qatar | Malaysia | Middle East | Pakistan  
Singapore | South Africa | Thailand | Turkey



Benham & Reeves