



Benham & Reeves

## **Eagle Point, City Road, EC1V**

£877 per week, £3,800 per month + fees

 2 Bedrooms    2 Bathrooms    Furnished

An interior designed contemporary 16th floor apartment situated within a desirable development located on City Road within minutes from Old Street Station (Northern Line and Mainline Rail network and a brief walk to Shoreditch and Hoxton.

Please [click here](#) for full detail

## Property features

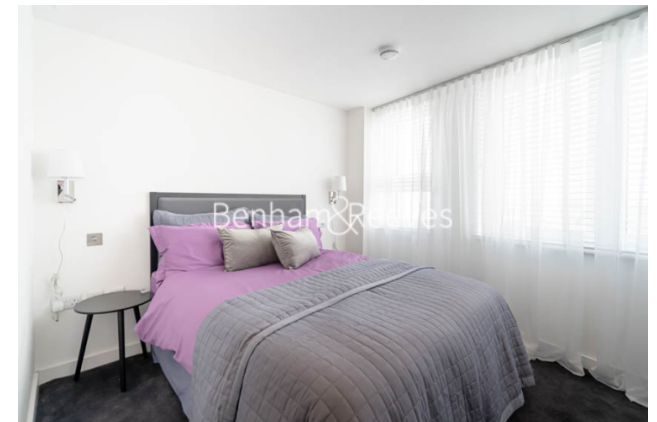
**Furnished | Spacious 2 bedroom apartment | Bespoke bathroom and en-suite shower | Kitchen fitted with modern appliances | Open plan living space | EPC-B | Large fitted wardrobes | 24-Concierge and Gym | Nearby Old Street station moments away**

For more information about this property,  
please call our City branch on

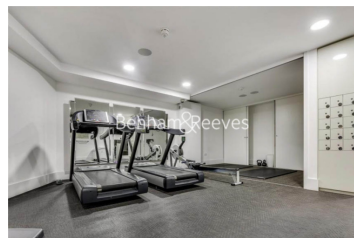
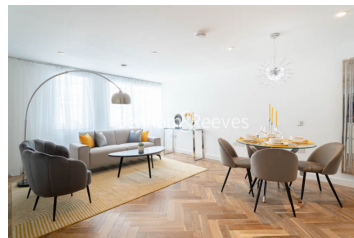
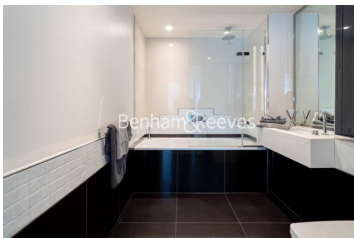
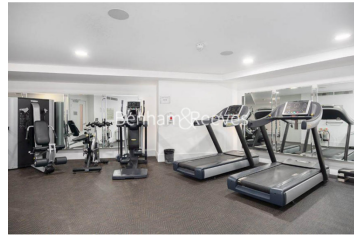
**020 7213 9700**

Redress & Client Money Protection :

Benham and Reeves are members of The Property Ombudsman redress scheme and have Client Money protection with ARLA Propertymark. You can find more information on our website at <https://www.benhamandreeves.com/membership/>



Benham & Reeves





# Eagle Point, City Road, EC1V

£877 per week, £3,800 per month + fees

www.benhams.com



Floor Plan measurements are approximate and are for illustrative purposes only. While we do not doubt the floor plans accuracy, we make no guarantee, warranty or representation as to the accuracy and completeness of the floor plan.

Score	Energy rating	Current	Potential
92+	A		
81-91	B	86 B	86 B
69-80	C		
55-68	D		
39-54	E		
21-38	F		
1-20	G		

## London branches open six days a week Mon - Sat

Canary Wharf | City | Colindale | Dartmouth Park | Ealing | Fulham  
Hammersmith | Hampstead | Highgate | Hyde Park | Kensington | Kew  
Knightsbridge | Nine Elms | Shoreditch | Southall | Surrey Quays  
Wapping | Wembley | White City | Woolwich

## International offices

China | Hong Kong SAR | India | Indonesia | Qatar | Malaysia | Middle East | Pakistan  
Singapore | South Africa | Thailand | Turkey



Benham & Reeves