



Benham & Reeves

One Blackfriars, City, SE1

£1,673 per week, £7,250 per month + fees

 2 Bedrooms  2 Bathrooms  Furnished

Luxury two-bedroom apartment set within the highly prestigious One Blackfriars development on The Southbank. Located within a short walk of The City and easy reach of The West End and Canary Wharf.

Please [click here](#) for full detail

Property features

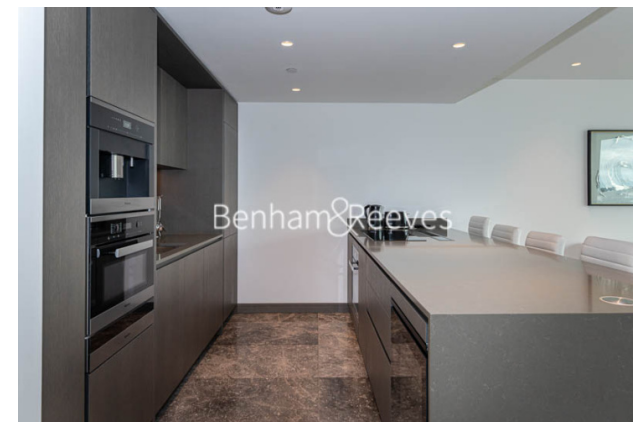
Two Bedroom luxury interior designed apartment | Large bedrooms with feature lighting and integrated storage | Underfloor heating & comfort cooling | Home automation - feature and mood lighting control | Wall mounted Sonos SoundBar system & flat screen TV | EPC-B | Residents pool and spa, gym, cinema and wine tasting room | Executive Lounge on 32nd floor with exceptional views | Sky garden & a dedicated 24h concierge | Moments from the Southbank, short walk to the City

For more information about this property,
please call our Property Management branch on

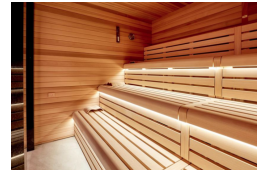
020 7319 9740

Redress & Client Money Protection :

Benham and Reeves are members of The Property Ombudsman redress scheme and have Client Money protection with ARLA Propertymark. You can find more information on our website at <https://www.benhamandreeves.com/membership/>



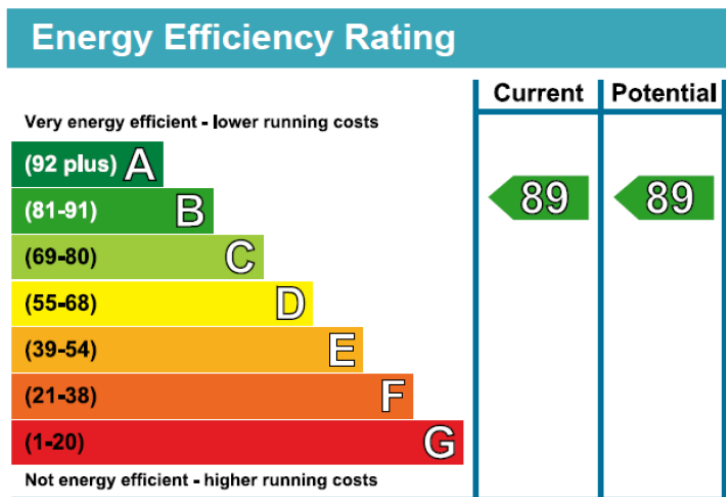
Benham & Reeves



One Blackfriars, City, SE1

£1,673 per week, £7,250 per month + fees

www.benhams.com



London branches open six days a week Mon - Sat

Canary Wharf | City | Colindale | Dartmouth Park | Ealing | Fulham
Hammersmith | Hampstead | Highgate | Hyde Park | Kensington | Kew
Knightsbridge | Nine Elms | Shoreditch | Southall | Surrey Quays
Wapping | Wembley | White City | Woolwich

International offices

China | Hong Kong SAR | India | Indonesia | Qatar | Malaysia | Middle East |
Singapore | South Africa | Thailand | Turkey

