



Benham & Reeves

Theobalds Road, City, WC1X

£900 per week, £3,900 per month + fees

 2 Bedrooms  2 Bathrooms  Furnished

Smart and contemporary two bedroom, two bathroom apartment situated within a period building conversion on Theobalds Road, close to Chancery Lane, Holborn and Bloomsbury.

Please [click here](#) for full detail

Property features

Two Bedrooms | Two Bathrooms | Open Plan Reception | Furnished | Fitted Kitchen | EPC-B | Wood Floors | Daytime Building Porter | Excellent Transport links nearby

For more information about this property,
please call our City branch on

020 7213 9700

Redress & Client Money Protection :

Benham and Reeves are members of The Property Ombudsman redress scheme and have Client Money protection with ARLA Propertymark. You can find more information on our website at <https://www.benhams.com/membership/>



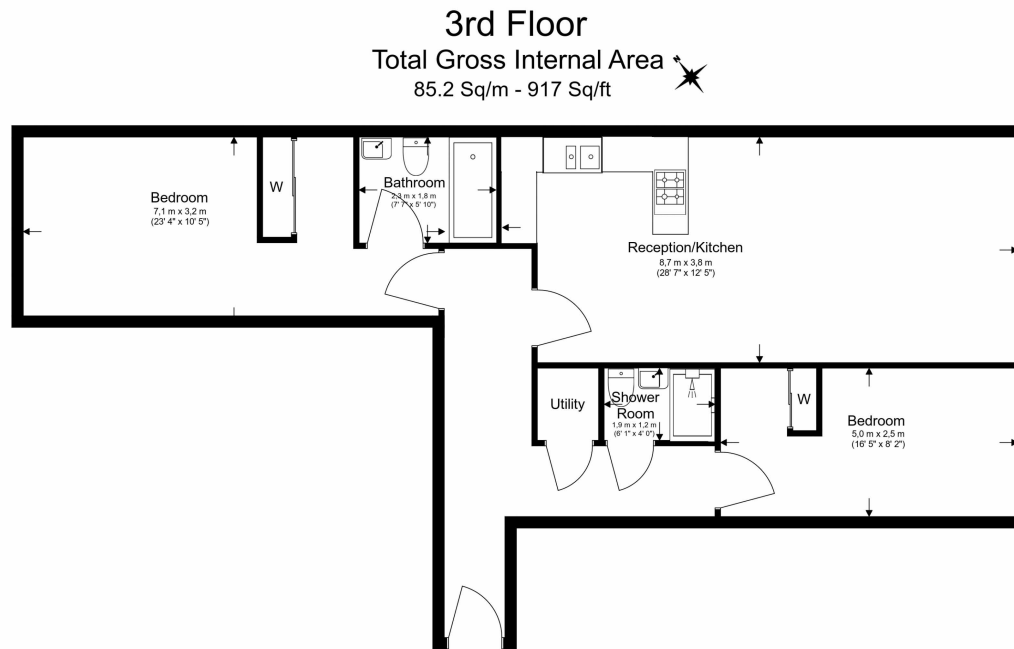
Benham & Reeves




Theobalds Road, City, WC1X

£900 per week, £3,900 per month + fees

www.benhams.com



Floor Plan measurements are approximate and are for illustrative purposes only. While we do not doubt the floor plans accuracy, we make no guarantee, warranty or representation as to the accuracy and completeness of the floor plan.

Energy Efficiency Rating		
	Current	Potential
Very energy efficient - lower running costs		
(92 plus) A		
(81-91) B	87	87
(69-80) C		
(55-68) D		
(39-54) E		
(21-38) F		
(1-20) G		
Not energy efficient - higher running costs		
England & Wales		EU Directive 2002/91/EC 

London branches open six days a week Mon - Sat

Canary Wharf | City | Colindale | Dartmouth Park | Ealing | Fulham
Hammersmith | Hampstead | Highgate | Hyde Park | Kensington | Kew
Knightsbridge | Nine Elms | Shoreditch | Southall | Surrey Quays
Wapping | Wembley | White City | Woolwich

International offices

China | Hong Kong SAR | India | Indonesia | Qatar | Malaysia | Middle East | Pakistan
Singapore | South Africa | Thailand | Turkey



Benham & Reeves