



Benham & Reeves

Sanday Drive, Colindale Gardens, NW9

£415 per week, £1,800 per month + fees

 1 Bedroom  1 Bathroom  Unfurnished

Brand New 2nd floor apartment, with UNDERFLOOR HEATING THROUGHOUT, situated in a vibrant community set in nine acres of green space and excellent amenities. Located 0.2 Miles from Colindale Underground Station (Northern Line) EPC – B

Please [click here](#) for full detail

Property features

Brand New Apartment | Private Balcony | 2 min walk to Tube | No parking | Situated within Colindale Gardens | EPC- B | On-site Gym | Offered on an Unfurnished basis | 24-Hour Concierge | 0.2 miles to Colindale Underground Station

For more information about this property,
please call our Colindale branch on

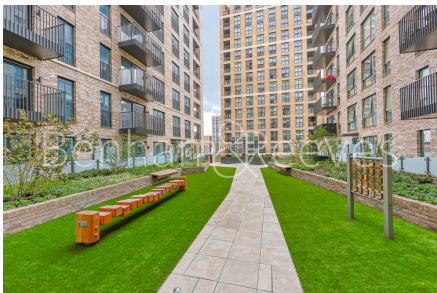
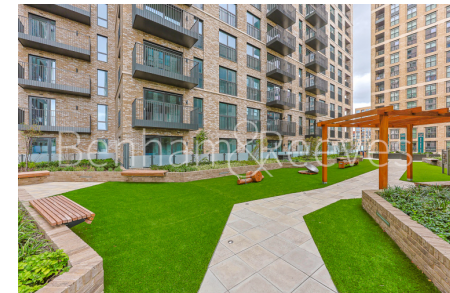
020 8732 7980

Redress & Client Money Protection :

Benham and Reeves are members of The Property Ombudsman redress scheme and have Client Money protection with ARLA Propertymark. You can find more information on our website at <https://www.benhams.com/membership/>



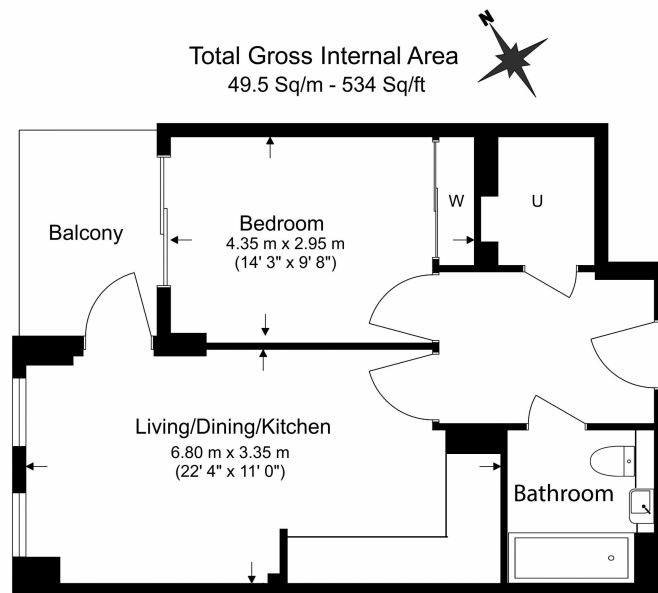
Benham & Reeves



Sanday Drive, Colindale Gardens, NW9

£415 per week, £1,800 per month + fees

www.benhams.com



Benham & Reeves

Floor Plan measurements are approximate and are for illustrative purposes only. While we do not doubt the floor plans accuracy, we make no guarantee, warranty or representation as to the accuracy and completeness of the floor plan.

Score	Energy rating	Current	Potential
92+	A		
81-91	B	85 B	85 B
69-80	C		
55-68	D		
39-54	E		
21-38	F		
1-20	G		

London branches open six days a week Mon - Sat

Canary Wharf | City | Colindale | Dartmouth Park | Ealing | Fulham
Hammersmith | Hampstead | Highgate | Hyde Park | Kensington | Kew
Knightsbridge | Nine Elms | Shoreditch | Southall | Surrey Quays
Wapping | Wembley | White City | Woolwich

International offices

China | Hong Kong SAR | India | Indonesia | Qatar | Malaysia | Middle East |
Singapore | South Africa | Thailand | Turkey



Benham & Reeves