



Benham & Reeves

Thonrey Close, Colindale Gardens, NW9

£750 per week, £3,250 per month + fees

 3 Bedrooms  2 Bathrooms  Furnished

3 BEDROOM APARTMENT offering an OPEN PLAN lounge with FULLY FITTED KITCHEN leading onto a PRIVATE TERRACE, a MASTER BEDROOM and a luxury EN SUITE BATHROOM. 2 DOUBLE BEDROOMS WITH STORAGE. The property is situated 0.3 miles to COLINDALE UNDERGROUND STATION (Northern Line) EPC - B

Please [click here](#) for full detail

Property features

New Build Apartment | Large Private Terrace | South facing | New Development | Situated within Colindale Gardens | EPC- B | Furnished | On-site Gym | 24-Hour Concierge | 0.3 miles to Colindale Underground Station

For more information about this property,
please call our Colindale branch on

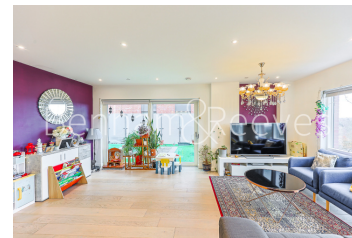
020 8732 7980

Redress & Client Money Protection :

Benham and Reeves are members of The Property Ombudsman redress scheme and have Client Money protection with ARLA Propertymark. You can find more information on our website at <https://www.benhamandreeves.com/membership/>



Benham & Reeves



Thonrey Close, Colindale Gardens, NW9

£750 per week, £3,250 per month + fees

www.benhams.com

Score	Energy rating	Current	Potential
92+	A		
81-91	B	86 B	86 B
69-80	C		
55-68	D		
39-54	E		
21-38	F		
1-20	G		

London branches open six days a week Mon - Sat

Canary Wharf | City | Colindale | Dartmouth Park | Ealing | Fulham
Hammersmith | Hampstead | Highgate | Hyde Park | Kensington | Kew
Knightsbridge | Nine Elms | Shoreditch | Southall | Surrey Quays
Wapping | Wembley | White City | Woolwich

International offices

China | Hong Kong SAR | India | Indonesia | Qatar | Malaysia | Middle East |
Singapore | South Africa | Thailand | Turkey

