



Benham & Reeves

Hoy Close, Colindale Gardens, NW9

£715 per week, £3,100 per month + fees

 3 Bedrooms  2 Bathrooms  Unfurnished

Bright and airy lower level Town House with private terrace situated in a sought after development in North West London, a brief (0.3 miles) from Colindale Underground Station (Northern Line) EPC - B

Please [click here](#) for full detail

Property features

Selection of Amenities On-site | Well Tended Communal Gardens | Private Terrace | Unfurnished | Situated within Colindale Gardens | EPC - B | 24 Hour Concierge | Secure Allocated Parking Space | On-site Gym | 0.3 miles to Colindale Underground Station

For more information about this property, please call our Colindale branch on

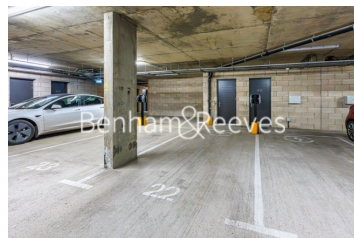
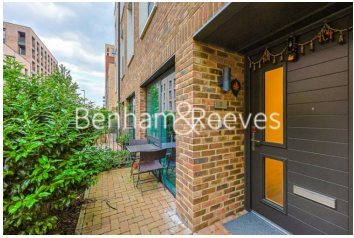
020 8732 7980

Redress & Client Money Protection :

Benham and Reeves are members of The Property Ombudsman redress scheme and have Client Money protection with ARLA Propertymark. You can find more information on our website at <https://www.benhams.com/membership/>



Benham & Reeves



Hoy Close, Colindale Gardens, NW9

£715 per week, £3,100 per month + fees

www.benhams.com



Score	Energy rating	Current	Potential
92+	A		93 A
81-91	B	85 B	
69-80	C		
55-68	D		
39-54	E		
21-38	F		
1-20	G		

London branches open six days a week Mon - Sat

Canary Wharf | City | Colindale | Dartmouth Park | Ealing | Fulham
Hammersmith | Hampstead | Highgate | Hyde Park | Kensington | Kew
Knightsbridge | Nine Elms | Shoreditch | Southall | Surrey Quays
Wapping | Wembley | White City | Woolwich

International offices

China | Hong Kong SAR | India | Indonesia | Qatar | Malaysia | Middle East |
Singapore | South Africa | Thailand | Turkey

