



Benham & Reeves

Benham & Reeves

Beaufort Square, Colindale, NW9

£623 per week, £2,700 per month + fees

 3 Bedrooms  3 Bathrooms  Furnished

A stunning large 7th floor apartment with excellent security and secure parking with direct access to the building situated in a highly sought-after development in North West London. A short 5-minute walk from Colindale Underground station (Northern Line).

Please [click here](#) for full detail

Property features

Selection of Amenities On-site | Well Tended Communal Gardens | Private Balconies | Tastefully Furnished | Situated within Beaufort Park, Colindale NW9 | EPC-C | 24 Hour Estate Management | Secure Underground Unallocated Parking | Fee Gym, Swimming Pool, Spa and Jacuzzi | 0.4 miles to Colindale Underground Station

For more information about this property,
please call our Colindale branch on

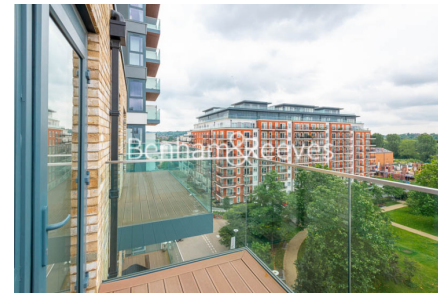
020 8732 7980

Redress & Client Money Protection :

Benham and Reeves are members of The Property Ombudsman redress scheme and have Client Money protection with ARLA Propertymark. You can find more information on our website at <https://www.benhams.com/membership/>



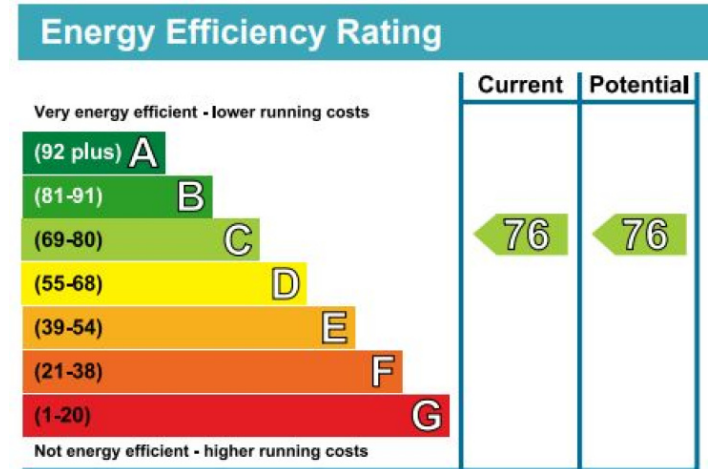
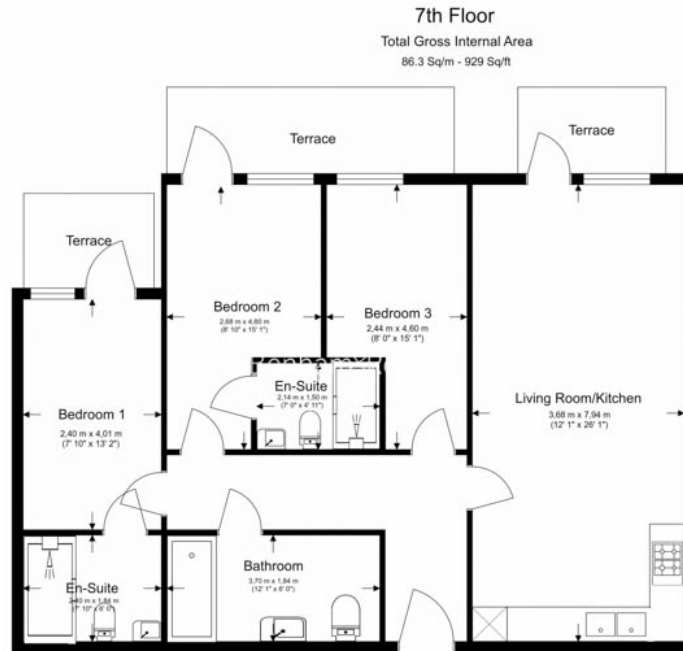
Benham & Reeves



Beaufort Square, Colindale, NW9

£623 per week, £2,700 per month + fees

www.benhams.com



London branches open six days a week Mon - Sat

Canary Wharf | City | Colindale | Dartmouth Park | Ealing | Fulham
Hammersmith | Hampstead | Highgate | Hyde Park | Kensington | Kew
Knightsbridge | Nine Elms | Shoreditch | Southall | Surrey Quays
Wapping | Wembley | White City | Woolwich

International offices

China | Hong Kong SAR | India | Indonesia | Qatar | Malaysia | Middle East |
Singapore | South Africa | Thailand | Turkey

