

Benham & Reeves

## **Beaufort Square, Colindale, NW9**

£450 per week, £1,950 per month + fees

 2 Bedrooms    2 Bathrooms    Furnished

Brand new luxurious 2 bedroom apartment in the newly built building, Golding House, located in the desirable Beaufort Park development in North West London. The apartment offers a large living space, open plan fitted kitchen with a built-in wine cooler, dishwasher, fridge/freezer, microwave, cooker and oven. Two double bedrooms with built in storage and master bedroom with en-suite.

Please [click here](#) for full detail

## Property features

**2 Bedrooms | 2 Bathrooms | Reception | Furnished | Fitted Kitchen | EPC-C | Secure Underground Parking | 24 Hour Concierge | Nearby Colindale Underground Station**

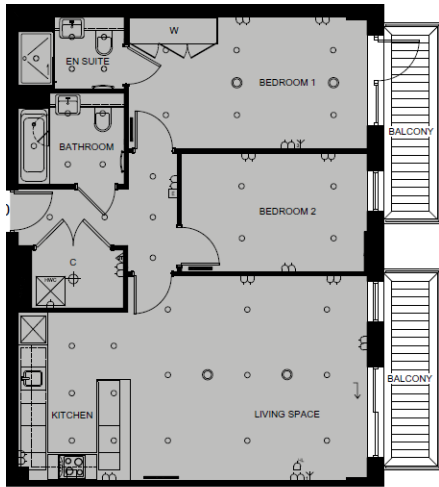
For more information about this property,  
please call our Colindale branch on

**020 8732 7980**

# Beaufort Square, Colindale, NW9

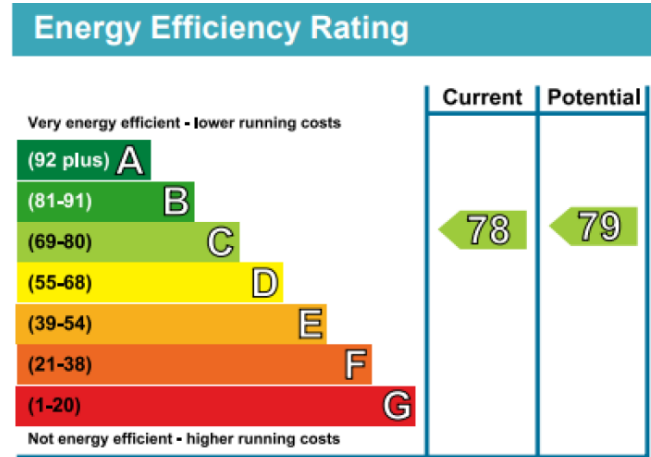
£450 per week, £1,950 per month + fees

www.benhams.com



Views South  
over Landscaped  
Parkland

Living Space	7.81m x 4.58m	25' 8" x 15' 0"
Bedroom 1	5.35m x 2.95m	17' 7" x 9' 8"
Bedroom 2	4.15m x 2.66m	13' 7" x 8' 9"



## London branches open six days a week Mon - Sat

Canary Wharf | City | Colindale | Dartmouth Park | Ealing | Fulham  
Hammersmith | Hampstead | Highgate | Hyde Park | Kensington | Kew  
Knightsbridge | Nine Elms | Shoreditch | Southall | Surrey Quays  
Wapping | Wembley | White City | Woolwich

## International offices

China | Hong Kong SAR | India | Indonesia | Qatar | Malaysia | Middle East |  
Singapore | South Africa | Thailand | Turkey

