



Benham & Reeves

## Beaufort Square, Colindale, NW9

£720 per week, £3,120 per month + fees

 3 Bedrooms    3 Bathrooms    Furnished

Large modern 6th floor apartment situated within a desirable development in North West London 0.4 miles on foot from Colindale Underground Station (Northern Line).

Please [click here](#) for full detail

## Property features

**Selection of amenities on site | Well tended communal gardens | Private balcony | Tastefully furnished | Situated within Beaufort Park development in Colindale NW9 | EPC-C | 24 Hours Estate Management | Newly build | Free resident's gym, swimming pool, spa and jacuzzi | 0.4 miles to Colindale underground station**

For more information about this property,  
please call our Colindale branch on

**020 8732 7980**

Redress & Client Money Protection :

Benham and Reeves are members of The Property Ombudsman redress scheme and have Client Money protection with ARLA Propertymark. You can find more information on our website at <https://www.benhamandreeves.com/membership/>



**Benham & Reeves**



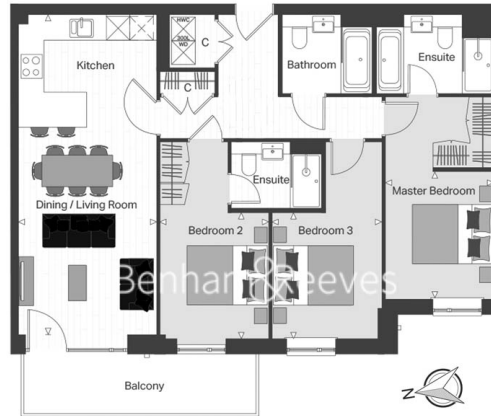


# Beaufort Square, Colindale, NW9

£720 per week, £3,120 per month + fees

www.benhams.com

Approx gross internal area: 1037sq/ft - 97sq/m



Living Space / Kitchen	8.14m x 3.52m	26' 8" x 11' 7"
Master Bedroom	3.23m x 2.76m	10' 7" x 9' 1"
Bedroom 2	3.20m x 2.75m	10' 6" x 9' 0"
Bedroom 3	3.20m x 2.78m	10' 6" x 9' 1"
Balcony	8.8 sq m	94 sq ft

Whilst every attempt has been made to ensure the accuracy of the floor plan contained here, measurements of doors, windows, rooms and any other items are approximate and no responsibility is taken for any error, omission, or mis-statement. This plan is for illustrative purposes only and should be used as such by any prospective purchaser. The services, systems and appliances shown have not been tested and no guarantee as to their operability or efficiency can be given.  
Made with Metropix 62016

Score	Energy rating	Current	Potential
92+	A		
81-91	B		
69-80	C	77   c	77   c
55-68	D		
39-54	E		
21-38	F		
1-20	G		

## London branches open six days a week Mon - Sat

Canary Wharf | City | Colindale | Dartmouth Park | Ealing | Fulham  
Hammersmith | Hampstead | Highgate | Hyde Park | Kensington | Kew  
Knightsbridge | Nine Elms | Shoreditch | Southall | Surrey Quays  
Wapping | Wembley | White City | Woolwich

## International offices

China | Hong Kong SAR | India | Indonesia | Qatar | Malaysia | Middle East | Pakistan  
Singapore | South Africa | Thailand | Turkey



Benham & Reeves