



Benham & Reeves

Capitol Way, Colindale, NW9

£462 per week, £2,002 per month + fees

 2 Bedrooms  2 Bathrooms  Unfurnished

Stunning 5th floor apartment, with excellent security, including parking, and good resident amenities, situated in a desirable development in North West London. Colindale Underground Station (Northern Line) is within a 0.4-mile walk.

Please [click here](#) for full detail

Property features

Selection of Amenities nearby | Well-Tended Communal Gardens | Brand New Apartment | Unfurnished | Situated within TNQ development | EPC-B | 24 Hour Concierge | Water rates included | Frequent Bus Services | 0.4 miles to Colindale Underground Station

For more information about this property,
please call our Colindale branch on

020 8732 7980

Redress & Client Money Protection :

Benham and Reeves are members of The Property Ombudsman redress scheme and have Client Money protection with ARLA Propertymark. You can find more information on our website at <https://www.benhamandreeves.com/membership/>



Benham & Reeves

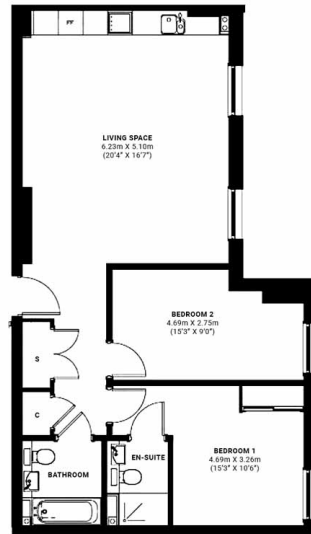


Capitol Way, Colindale, NW9

£462 per week, £2,002 per month + fees

www.benhams.com

4th Floor
Total Gross Internal Area
102 Sq/m - 1097.8 Sq/ft



Floor Plan measurements are approximate and are for illustrative purposes only. While we do not doubt the floor plans accuracy, we make no guarantee, warranty or representation as to the accuracy and completeness of the floor plan.

Score	Energy rating	Current	Potential
92+	A		
81-91	B	85 B	85 B
69-80	C		
55-68	D		
39-54	E		
21-38	F		
1-20	G		

London branches open six days a week Mon - Sat

Canary Wharf | City | Colindale | Dartmouth Park | Ealing | Fulham
Hammersmith | Hampstead | Highgate | Hyde Park | Kensington | Kew
Knightsbridge | Nine Elms | Shoreditch | Southall | Surrey Quays
Wapping | Wembley | White City | Woolwich

International offices

China | Hong Kong SAR | India | Indonesia | Qatar | Malaysia | Middle East | Pakistan
Singapore | South Africa | Thailand | Turkey



Benham & Reeves