



Benham & Reeves

Queenstown Road, Nine Elms, SW11

£1,500 per week, £6,500 per month + fees

 3 Bedrooms  2 Bathrooms  Furnished

Bright and spacious family size 7th floor apartment with wraparound balcony set in a delightful development opposite Battersea Park and close to the 'River Thames Perfectly located moments from Battersea Park Station.

Please [click here](#) for full detail

Property features

Three double bedrooms | Two bathrooms | Large living space | Large balcony | Battersea Park views | EPC-B | 24 Hour concierge | Gym | Swimming Pool | Battersea Power Station Station

For more information about this property,
please call our Nine Elms branch on

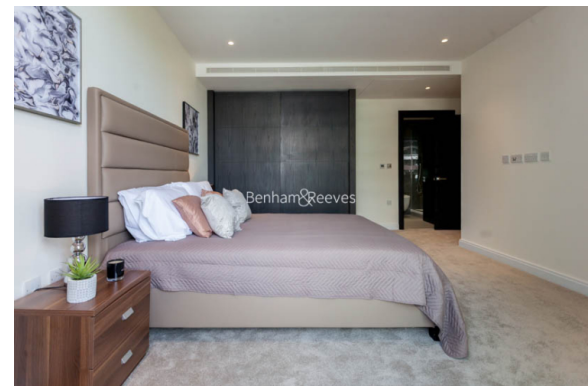
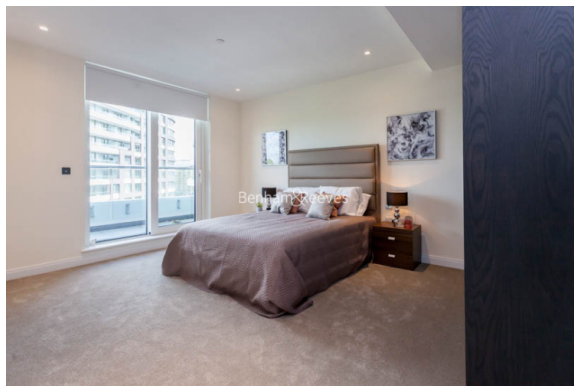
020 3282 3700

Redress & Client Money Protection :

Benham and Reeves are members of The Property Ombudsman redress scheme and have Client Money protection with ARLA Propertymark. You can find more information on our website at <https://www.benhams.com/membership/>



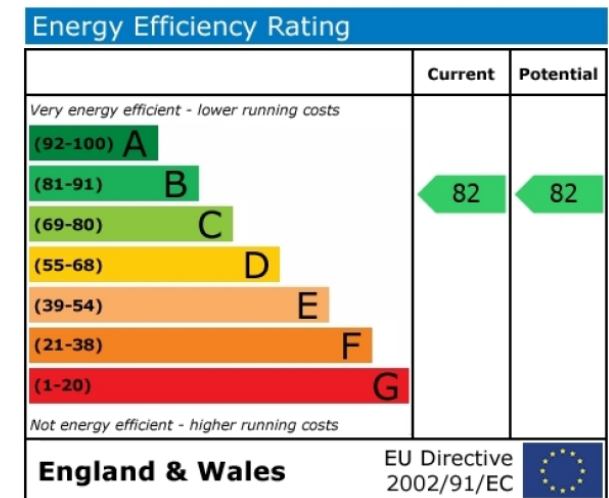
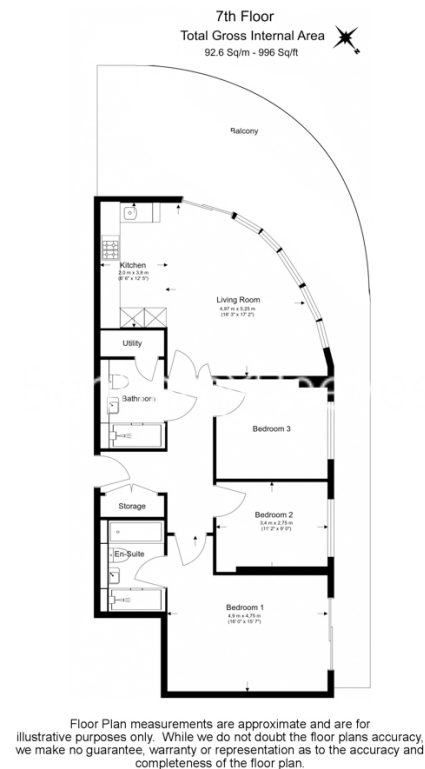
Benham & Reeves



Queenstown Road, Nine Elms, SW11

£1,500 per week, £6,500 per month + fees

www.benhams.com



London branches open six days a week Mon - Sat

Canary Wharf | City | Colindale | Dartmouth Park | Ealing | Fulham
Hammersmith | Hampstead | Highgate | Hyde Park | Kensington | Kew
Knightsbridge | Nine Elms | Shoreditch | Southall | Surrey Quays
Wapping | Wembley | White City | Woolwich

International offices

China | Hong Kong SAR | India | Israel | Malaysia | Middle East | Pakistan
Qatar | Singapore | South Africa | Thailand | Turkey



Benham & Reeves