



Benham & Reeves

Admiralty Building, Kingston Upon Thames, KT2

£1,108 per week, £4,800 per month + fees

 3 Bedrooms  2 Bathrooms  Furnished

Bright apartment, with direct views of the River Thames and underground parking, situated in a popular and modern development close to the amenities of Kingston and Kingston Station.

Please [click here](#) for full detail

Property features

Wood Floors | Private Terrace | Concierge | Built In Storage | Local Amenities | EPC-D | Communal Roof Terrace | Wine Cooler | River Views | Kingston Station

For more information about this property,
please call our Kew branch on

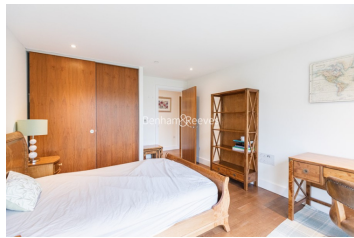
020 8326 1960



Redress & Client Money Protection :

Benham and Reeves are members of The Property Ombudsman redress scheme and have Client Money protection with ARLA Propertymark. You can find more information on our website at <https://www.benhamandreeves.com/membership/>

Benham & Reeves



Admiralty Building, Kingston Upon Thames, KT2

www.benhams.com

£1,108 per week, £4,800 per month + fees

Energy performance certificate (EPC)

1047281 Current EPC rating Current calculated average energy efficiency 82/100	D	Valid until 18 July 2031 Certificate number: 0000-0000-0000-0000
--	----------	--

Property type: Mid-floor flat
Total floor area: 112 square metres

Rules on letting this property

Properties can be rented if they have an energy rating from A to E.

If the property is rated F or G, it cannot be let, unless an exemption has been registered. You can read [guidance for landlords on the regulations and exemptions](https://www.gov.uk/guidance/energy-ratings-for-rental-properties) at <https://www.gov.uk/guidance/energy-ratings-for-rental-properties>.

Energy efficiency rating for this property

This property's current energy rating is D. It has the potential to be C.

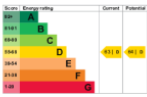
[See how to improve the property's energy efficiency.](#)

The graph shows this property's current and potential energy efficiency.

Properties are given a rating from A (most efficient) to G (least efficient).

Properties are also given a score. The higher the number the lower your fuel bills are likely to be.

For properties in England and Wales:
the average energy rating is D
the average energy score is 60



London branches open six days a week Mon - Sat

Canary Wharf | City | Colindale | Dartmouth Park | Ealing | Fulham
Hammersmith | Hampstead | Highgate | Hyde Park | Kensington | Kew
Knightsbridge | Nine Elms | Shoreditch | Southall | Surrey Quays
Wapping | Wembley | White City | Woolwich

International offices

China | Hong Kong SAR | India | Indonesia | Qatar | Malaysia | Middle East | Pakistan
Singapore | South Africa | Thailand | Turkey

