



Benham & Reeves

**Boulevard Drive, Colindale, NW9**

£393 per week, £1,703 per month + fees

 1 Bedroom     1 Bathroom     Furnished

"\*\*ON SITE AGENT\*\*"

Stylish 1st floor Manhattan style apartment with excellent security and residents' amenities situated in a desirable development in North West London. Conveniently located a brief walk from Colindale Underground Station (Northern Line) EPC - C

\*\*MORE PROPERTIES TO OFFER\*\*"

Please [click here](#) for full detail

## Property features

**Selection of Amenities On-site | Well Tended Communal Gardens | Private Balcony | Tastefully Furnished | Situated within Beaufort Park, Colindale NW9 | EPC-C | Modern Apartment | Water Rates Included | Gym, Swimming Pool, Spa and Jacuzzi | 0.4 miles to Colindale Underground Station**

For more information about this property,  
please call our Colindale branch on

**020 8732 7980**

Redress & Client Money Protection :

Benham and Reeves are members of The Property Ombudsman redress scheme and have Client Money protection with ARLA Propertymark. You can find more information on our website at <https://www.benhamandreeves.com/membership/>



Benham&Reeves

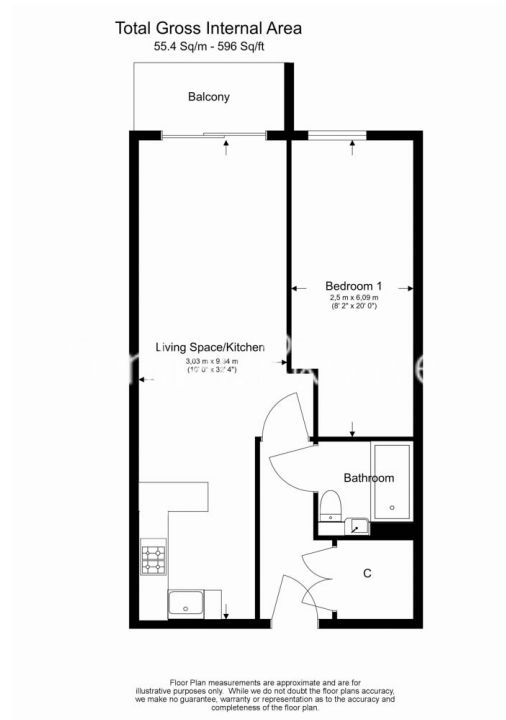




# Boulevard Drive, Colindale, NW9

£393 per week, £1,703 per month + fees

[www.benhams.com](http://www.benhams.com)



Score	Energy rating	Current	Potential
92+	A		
81-91	B		
69-80	C	78   c	79   c
55-68	D		
39-54	E		
21-38	F		
1-20	G		

## London branches open six days a week Mon - Sat

Canary Wharf | City | Colindale | Dartmouth Park | Ealing | Fulham  
Hammersmith | Hampstead | Highgate | Hyde Park | Kensington | Kew  
Knightsbridge | Nine Elms | Shoreditch | Southall | Surrey Quays  
Wapping | Wembley | White City | Woolwich

## International offices

China | Hong Kong SAR | India | Indonesia | Qatar | Malaysia | Middle East |  
Singapore | South Africa | Thailand | Turkey



Benham & Reeves