



Benham & Reeves

**Joslin Avenue, Colindale, NW9**

£370 per week, £1,603 per month + fees

 1 Bedroom    1 Bathroom    Furnished

Spacious fourth floor apartment overlooking attractive landscaped gardens and good transport links in a new transformed North West London development. Ideally located 0.2 miles from Colindale Underground station (Northern Line).

Please [click here](#) for full detail

## Property features

**Selection of Amenities On-site | Well Tended Communal Gardens | Close to Amenities | Tastefully Furnished | Situated within Beaufort Park, Colindale NW9 | EPC-B | Wooden Flooring | Allocated Parking | 24 Hours underground service at the week end | 0.2 miles to Colindale Underground Station**

For more information about this property,  
please call our Colindale branch on

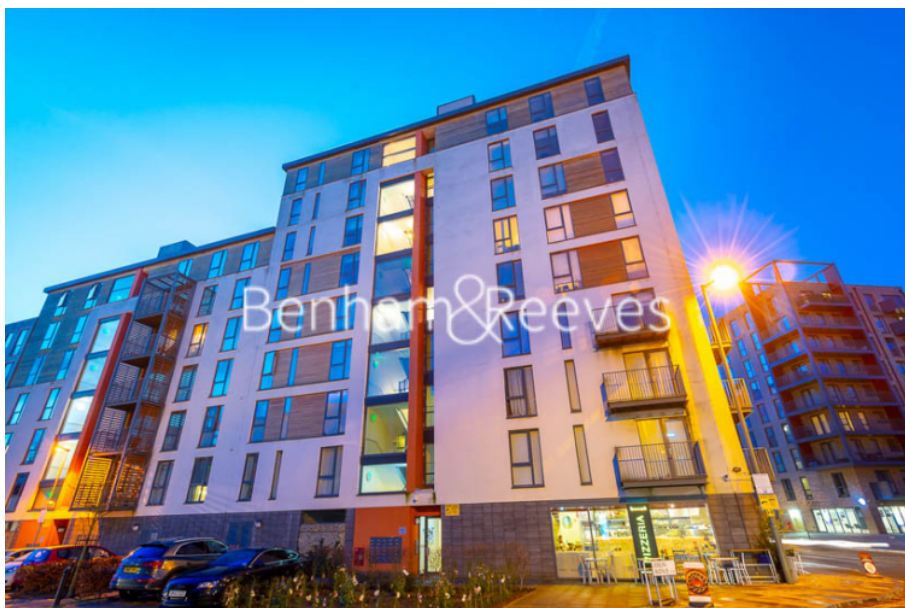
**020 8732 7980**

Redress & Client Money Protection :

Benham and Reeves are members of The Property Ombudsman redress scheme and have Client Money protection with ARLA Propertymark. You can find more information on our website at <https://www.benhams.com/membership/>



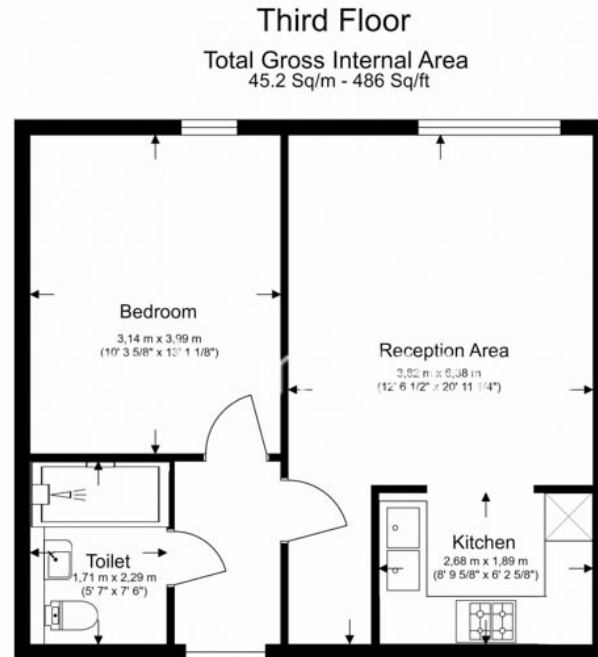
**Benham&Reeves**



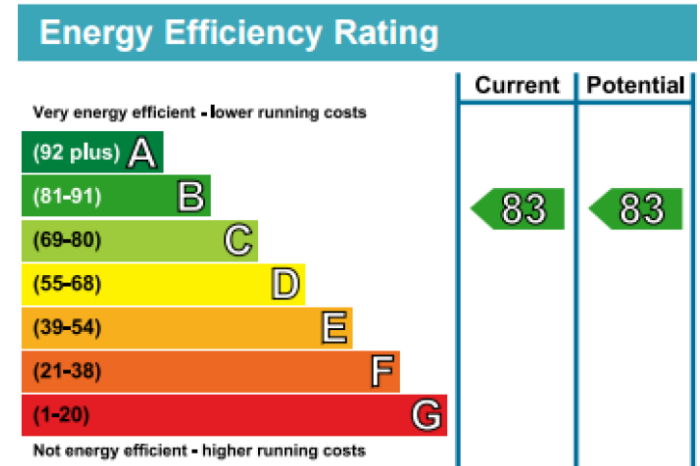
# Joslin Avenue, Colindale, NW9

£370 per week, £1,603 per month + fees

[www.benhams.com](http://www.benhams.com)



Floor Plan measurements are approximate and are for illustrative purposes only. While we do not doubt the floor plans accuracy, we make no guarantee, warranty or representation as to the accuracy and completeness of the floor plan.



## London branches open six days a week Mon - Sat

Canary Wharf | City | Colindale | Dartmouth Park | Ealing | Fulham  
Hammersmith | Hampstead | Highgate | Hyde Park | Kensington | Kew  
Knightsbridge | Nine Elms | Shoreditch | Southall | Surrey Quays  
Wapping | Wembley | White City | Woolwich

## International offices

China | Hong Kong SAR | India | Indonesia | Qatar | Malaysia | Middle East | Pakistan  
Singapore | South Africa | Thailand | Turkey



Benham & Reeves