



Benham & Reeves

Beaufort Square, Colindale, NW9

£650 per week, £2,817 per month + fees

 3 Bedrooms  3 Bathrooms  Furnished

Spacious, luxury 15th floor apartment, boasting three private balconies and secure underground parking situated in a popular North London development. Ideally located a short walk (0.4 miles) from Colindale Underground Station (Northern Line)

Please [click here](#) for full detail

Property features

Selection of Amenities On-site | Well Tended Communal Gardens | Private Balcony | 12 Month's FREE internet with Hyperoptic | Situated within Beaufort Park, Colindale NW9 | EPC-C | Brand New Apartment with Air conditioning | Secure Underground Unallocated Parking | Fee Gym, Swimming Pool, Spa and Jacuzzi | 0.4 miles to Colindale Underground Station

For more information about this property,
please call our Colindale branch on

020 8732 7980

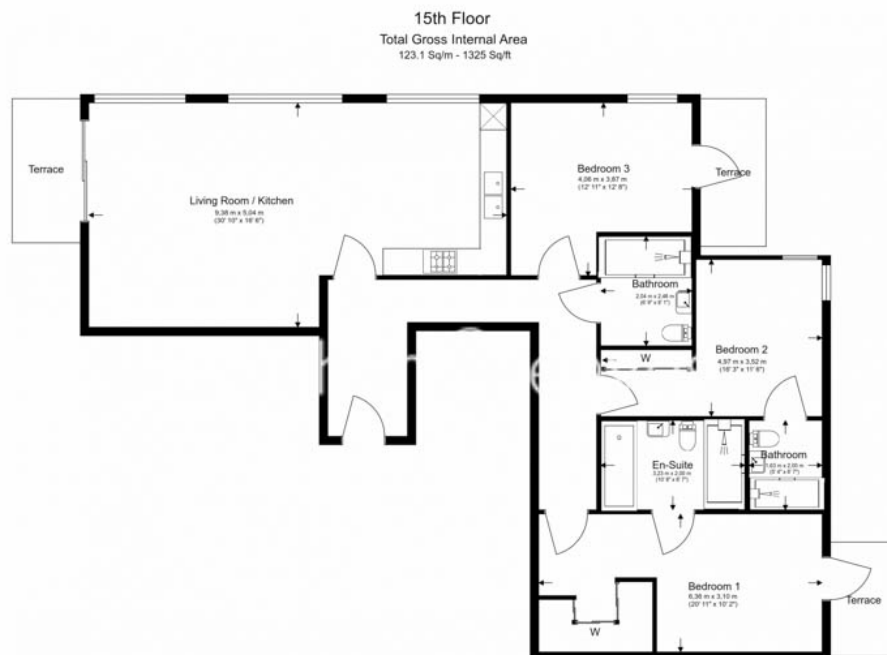




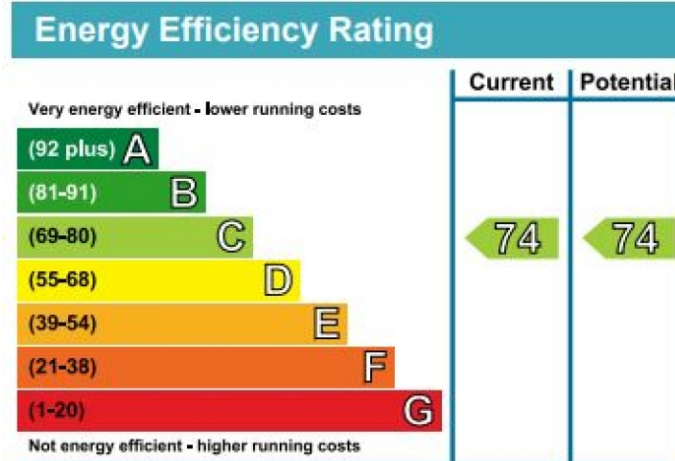
Beaufort Square, Colindale, NW9

£650 per week, £2,817 per month + fees

www.benhams.com



Floor Plan measurements are approximate and are for illustrative purposes only. While we do not doubt the floor plans accuracy, we make no guarantee, warranty or representation as to the accuracy and completeness of the floor plan.



London branches open six days a week Mon - Sat

Canary Wharf | City | Colindale | Dartmouth Park | Ealing | Fulham
Hammersmith | Hampstead | Highgate | Hyde Park | Kensington | Kew
Knightsbridge | Nine Elms | Shoreditch | Southall | Surrey Quays
Wapping | Wembley | White City | Woolwich

International offices

China | Hong Kong SAR | India | Israel | Malaysia | Middle East | Pakistan
Qatar | Singapore | South Africa | Thailand | Turkey



Benham & Reeves