



Benham&Reeves

Beaufort Square, Colindale, NW9

£410 per week, £1,777 per month + fees

 2 Bedrooms  2 Bathrooms  Furnished

****ON SITE AGENT****

Stylish 4th floor apartment with secure underground parking and good resident amenities situated in an immensely popular development in North West London. A short walk (0.4 miles) from Colindale Underground Station (Northern Line) EPC - C

****MORE PROPERTIES TO OFFER****

Please [click here](#) for full detail

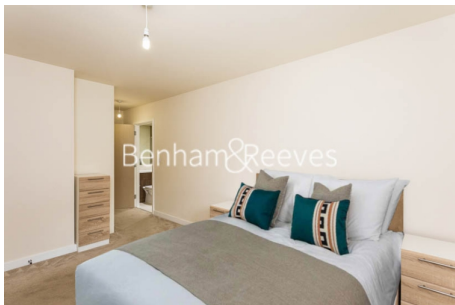
Property features

Selection of Amenities On-site | Well Tended Communal Gardens | Private Balcony | Tastefully Furnished | Situated within Beaufort Park, Colindale NW9 | EPC-C | 24 Hour Estate Management & Available to rent immediately | Secure Underground Unallocated Parking | Fee Gym, Swimming Pool, Spa and Jacuzzi | 0.4 miles to Colindale Underground Station

For more information about this property,
please call our Colindale branch on

020 8732 7980





Beaufort Square, Colindale, NW9

£410 per week, £1,777 per month + fees

www.benhams.com

Score	Energy rating	Current	Potential
92+	A		
81-91	B		
69-80	C	76 c	76 c
55-68	D		
39-54	E		
21-38	F		
1-20	G		

London branches open six days a week Mon - Sat

Canary Wharf | City | Colindale | Dartmouth Park | Ealing | Fulham
Hammersmith | Hampstead | Highgate | Hyde Park | Kensington | Kew
Knightsbridge | Nine Elms | Shoreditch | Southall | Surrey Quays
Wapping | Wembley | White City | Woolwich

International offices

China | Hong Kong SAR | India | Indonesia | Qatar | Malaysia | Middle East | Pakistan
Singapore | South Africa | Thailand | Turkey

