



Benham & Reeves

Avante Court, Kingston, KT1

£436 per week, £1,890 per month + fees

 2 Bedrooms  1 Bathroom  Unfurnished

Spacious apartment set in a gated development just a short walk from River Thames, close to the amenities of Kingston, and perfectly positioned a brief walk from Kingston Station.

Please [click here](#) for full detail

Property features

Residents Parking | Private Balcony | Gated Development | Local Amenities | Private Gated Car Park | EPC-D | 67 sqm - 685sq ft | Amazing Storage Space | Kew Bridge Station

For more information about this property,
please call our Kew branch on

020 8326 1960

Redress & Client Money Protection :

Benham and Reeves are members of The Property Ombudsman redress scheme and have Client Money protection with ARLA Propertymark. You can find more information on our website at <https://www.benhamandreeves.com/membership/>



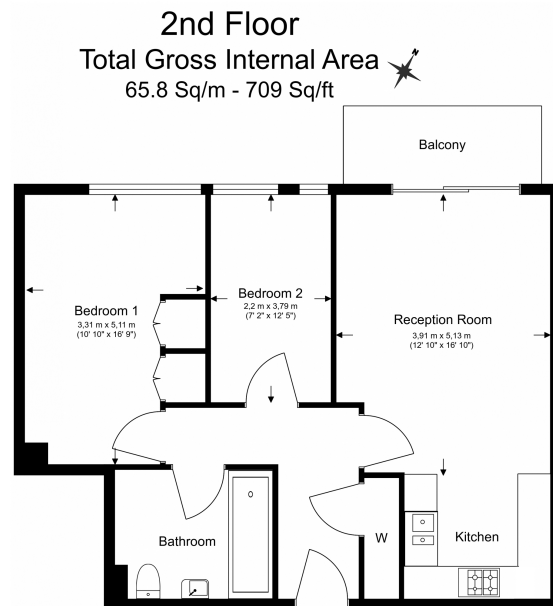
Benham & Reeves



Avante Court, Kingston, KT1

£436 per week, £1,890 per month + fees

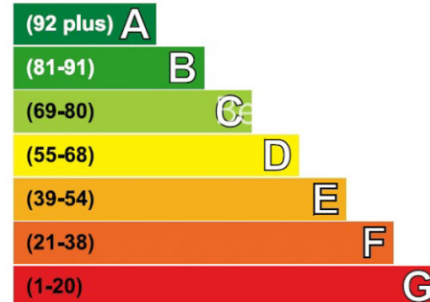
www.benhams.com



Floor Plan measurements are approximate and are for illustrative purposes only. While we do not doubt the floor plans accuracy, we make no guarantee, warranty or representation as to the accuracy and completeness of the floor plan.

Energy Efficiency Rating

Very energy efficient - lower running costs



Not energy efficient - higher running costs

Current	Potential
61	73

London branches open six days a week Mon - Sat

Canary Wharf | City | Colindale | Dartmouth Park | Ealing | Fulham
Hammersmith | Hampstead | Highgate | Hyde Park | Kensington | Kew
Knightsbridge | Nine Elms | Shoreditch | Southall | Surrey Quays
Wapping | Wembley | White City | Woolwich

International offices

China | Hong Kong SAR | India | Israel | Malaysia | Middle East | Pakistan
Qatar | Singapore | South Africa | Thailand | Turkey



Benham & Reeves