



Benham & Reeves

Thonrey Close, Colindale, NW9

£727 per week, £3,150 per month + fees

 4 Bedrooms  2 Bathrooms  Unfurnished

Expansive lower-level duplex, with private terrace situated in a sought-after development located 0.3 miles to Colindale Underground Station (Northern Line) EPC - B

Please [click here](#) for full detail

Property features

**Selection of Amenities On-site | Well Tended Communal Gardens | Private Balcony | Unfurnished
| Situated within Colindale Gardens | EPC-B | Available to rent from end of April 2024 | 24 Hour
Concierge | Secure Allocated Parking Space | 0.3 miles to Colindale Underground Station**

For more information about this property,
please call our Colindale branch on

020 8732 7980

Redress & Client Money Protection :

Benham and Reeves are members of The Property Ombudsman redress scheme and have Client Money protection with ARLA Propertymark.
You can find more information on our website at <https://www.benhamandreeves.com/membership/>



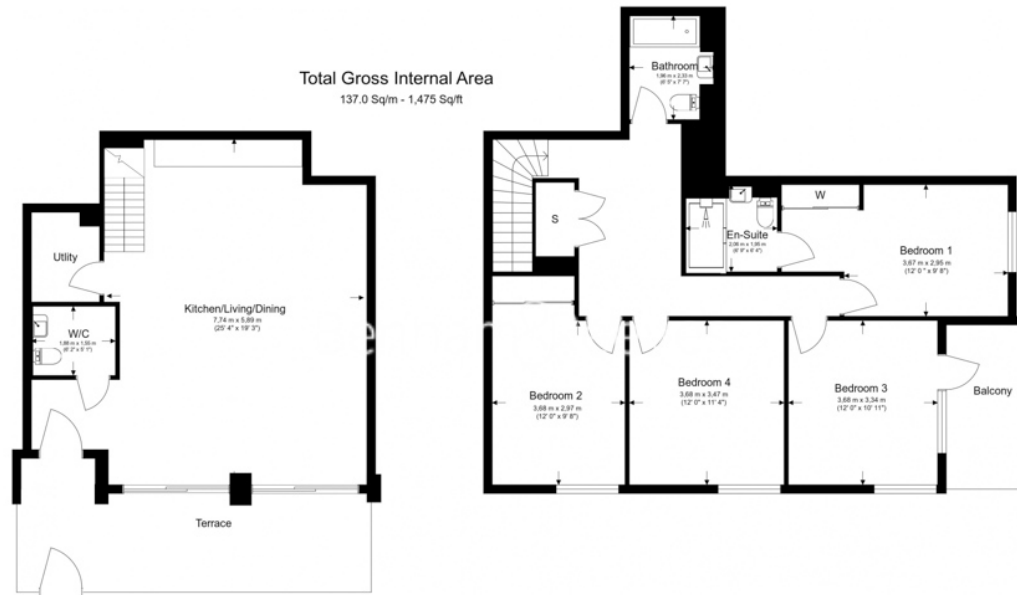
Benham & Reeves



Thonrey Close, Colindale, NW9

£727 per week, £3,150 per month + fees

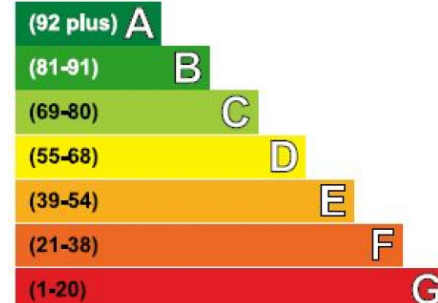
www.benhams.com



Floor Plan measurements are approximate and are for illustrative purposes only. While we do not doubt the floor plans accuracy, we make no guarantee, warranty or representation as to the accuracy and completeness of the floor plan.

Energy Efficiency Rating

Very energy efficient - lower running costs



Not energy efficient - higher running costs

Current	Potential
86	86

London branches open six days a week Mon - Sat

Canary Wharf | City | Colindale | Dartmouth Park | Ealing | Fulham
Hammersmith | Hampstead | Highgate | Hyde Park | Kensington | Kew
Knightsbridge | Nine Elms | Shoreditch | Southall | Surrey Quays
Wapping | Wembley | White City | Woolwich

International offices

China | Hong Kong SAR | India | Indonesia | Qatar | Malaysia | Middle East | Pakistan
Singapore | South Africa | Thailand | Turkey



Benham & Reeves