



Benham & Reeves

**Caversham Road, Colindale, NW9**

£542 per week, £2,349 per month + fees

 2 Bedrooms    2 Bathrooms    Furnished

A stylish 4th floor apartment situated within a desirable development with excellent security and facilities in in Northwest London, a brief walk from Colindale underground station (Northern line)

Please [click here](#) for full detail

## Property features

**Selection of Amenities On-site | Overlooking the beautiful landscaped Courtyard | Private Terrace | 1 Year Free Wi-Fi and Sky Package | Situated within Beaufort Park, Colindale NW9 | EPC-B | 24 Hour Estate Management | Water Rates Included | Fee Gym, Swimming Pool, Spa and Jacuzzi | 0.4 miles to Colindale Underground Station**

For more information about this property,  
please call our Colindale branch on

**020 8732 7980**

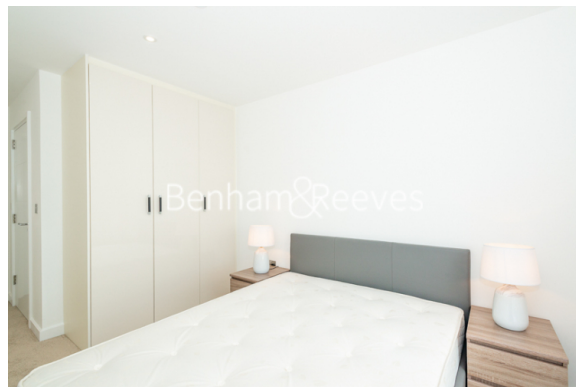
Redress & Client Money Protection :

Benham and Reeves are members of The Property Ombudsman redress scheme and have Client Money protection with ARLA Propertymark. You can find more information on our website at <https://www.benhamandreeves.com/membership/>



**Benham & Reeves**

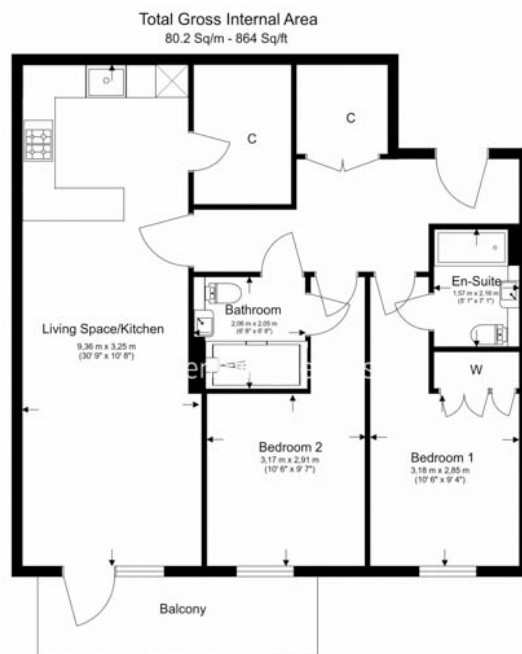




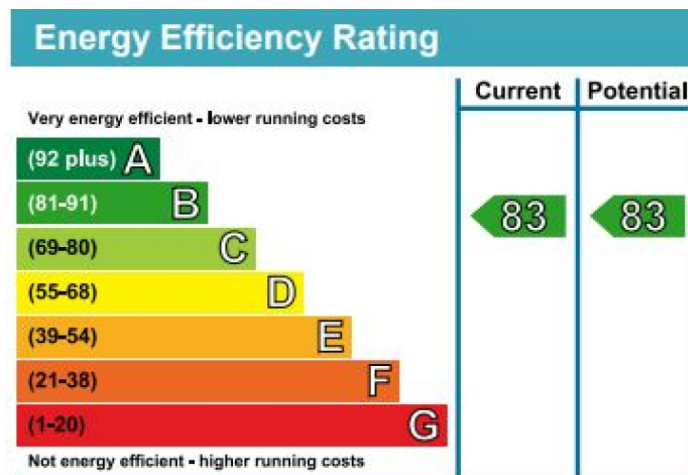
# Caversham Road, Colindale, NW9

£542 per week, £2,349 per month + fees

www.benhams.com



Floor Plan measurements are approximate and are for illustrative purposes only. While we do not doubt the floor plans accuracy, we make no guarantee, warranty or representation as to the accuracy and completeness of the floor plan.



## London branches open six days a week Mon - Sat

Canary Wharf | City | Colindale | Dartmouth Park | Ealing | Fulham  
Hammersmith | Hampstead | Highgate | Hyde Park | Kensington | Kew  
Knightsbridge | Nine Elms | Shoreditch | Southall | Surrey Quays  
Wapping | Wembley | White City | Woolwich

## International offices

China | Hong Kong SAR | India | Indonesia | Qatar | Malaysia | Middle East |  
Singapore | South Africa | Thailand | Turkey



Benham & Reeves