



Benham & Reeves

Filmworks Walk, Ealing, W5

£1,224 per week, £5,304 per month + fees

🛏️ 3 Bedrooms 🚿 3 Bathrooms 🛋️ Furnished

A spacious 6th floor apartment situated in Filmworks, an exciting development a brief walk from Ealing Broadway Underground station which has services to the West End in less than 30 minutes (Elizabeth, Central and District Lines).

Please [click here](#) for full detail

Property features

24hr concierge | 2 Large terrace | Wood floors | Furnished | 3 Bedrooms & 3 Bathrooms | EPC-B | 1635 sq ft (Approx) | 6 th Floor | On site cinema | Close to Ealing Broadway Station

For more information about this property,
please call our Ealing branch on

020 8280 0140

Redress & Client Money Protection :

Benham and Reeves are members of The Property Ombudsman redress scheme and have Client Money protection with ARLA Propertymark. You can find more information on our website at <https://www.benham.com/membership/>



Benham & Reeves



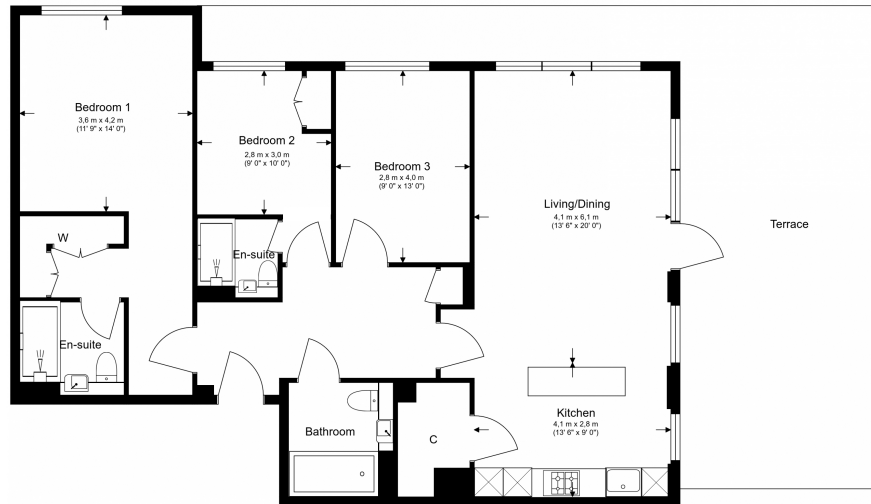
Filmworks Walk, Ealing, W5

£1,224 per week, £5,304 per month + fees

www.benhams.com

Total Gross Internal Area

152.0 Sq/m - 1,635 Sqft



Floor Plan measurements are approximate and are for illustrative purposes only. While we do not doubt the floor plans accuracy, we make no guarantee, warranty or representation as to the accuracy and completeness of the floor plan.

Score	Energy rating	Current	Potential
92+	A		
81-91	B	86 B	86 B
69-80	C		
55-68	D		
39-54	E		
21-38	F		
1-20	G		

London branches open six days a week Mon - Sat

Canary Wharf | City | Colindale | Dartmouth Park | Ealing | Fulham
Hammersmith | Hampstead | Highgate | Hyde Park | Kensington | Kew
Knightsbridge | Nine Elms | Shoreditch | Southall | Surrey Quays
Wapping | Wembley | White City | Woolwich

International offices

China | Hong Kong SAR | India | Israel | Malaysia | Middle East | Pakistan
Qatar | Singapore | South Africa | Thailand | Turkey



Benham & Reeves