



Benham&Reeves

## Lismore Boulevard, Colindale, NW9

£508 per week, £2,201 per month + fees

 2 Bedrooms    2 Bathrooms    Furnished

Bright and airy 2nd floor apartment free access to residents' facilities situated in a sought-after development in North West London. Ideally located a short walk from Colindale Underground station (Northern Line) EPC - B

**\*\*MORE PROPERTIES TO OFFER\*\***

Please [click here](#) for full detail

## Property features

**Great Amenities In The Area | New Development | Private Balcony | Next to the Police Training Centre | Situated within Colindale Gardens | EPC-B | 24 Hour Concierge | Resident's Gymnasium, Sauna and Steam room | 24 Hours Underground Service at Week Ends | 0.4 miles to Colindale Underground Station**

For more information about this property,  
please call our Colindale branch on

**020 8732 7980**

Redress & Client Money Protection :

Benham and Reeves are members of The Property Ombudsman redress scheme and have Client Money protection with ARLA Propertymark. You can find more information on our website at <https://www.benhams.com/membership/>



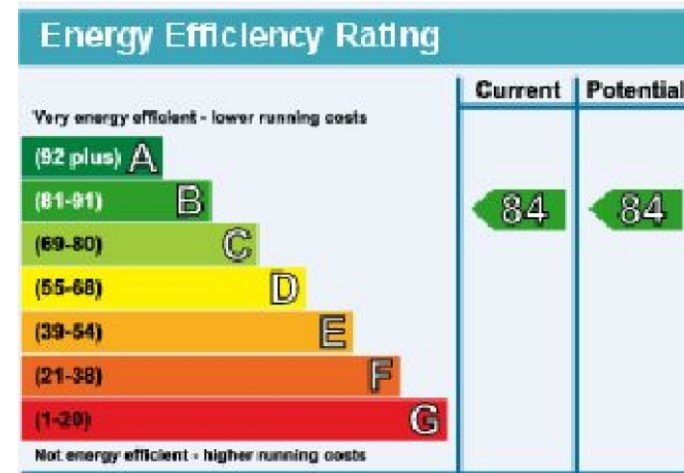
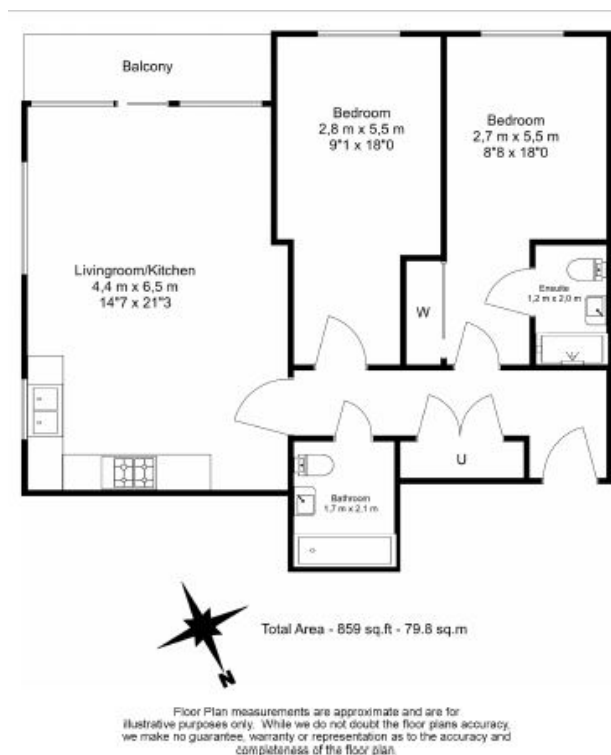
**Benham & Reeves**



# Lismore Boulevard, Colindale, NW9

£508 per week, £2,201 per month + fees

[www.benhams.com](http://www.benhams.com)



## London branches open six days a week Mon - Sat

Canary Wharf | City | Colindale | Dartmouth Park | Ealing | Fulham  
Hammersmith | Hampstead | Highgate | Hyde Park | Kensington | Kew  
Knightsbridge | Nine Elms | Shoreditch | Southall | Surrey Quays  
Wapping | Wembley | White City | Woolwich

## International offices

China | Hong Kong SAR | India | Indonesia | Qatar | Malaysia | Middle East |  
Singapore | South Africa | Thailand | Turkey



Benham & Reeves