



Benham&Reeves

Beaufort Square, Colindale , NW9

£430 per week, £1,863 per month + fees

 2 Bedrooms  2 Bathrooms  Furnished

Bright and airy spacious apartment situated in a prestigious development in North West London with excellent on-site amenities. The property is situated a brief 0.5 mile walk from Colindale Underground Station (Northern Line)

Please [click here](#) for full detail

Property features

Selection of Amenities On Site | Well Tended Communal Gardens | Private Balcony | Tastefully Furnished | Situated within Beaufort Park, Colindale NW9 | EPC-C | Brand-new Apartment | Water rates included | Fee Gym, Swimming Pool, Spa and Jacuzzi | 0.4 miles to Colindale Underground Station

For more information about this property,
please call our Colindale branch on

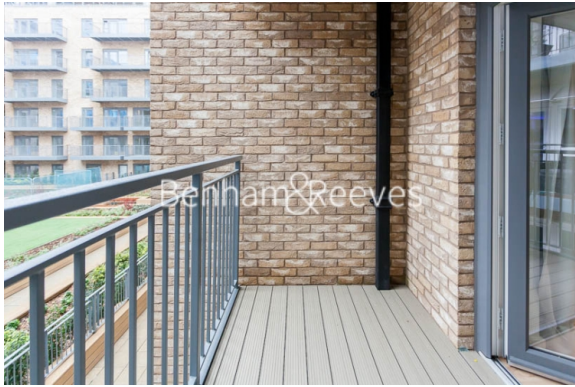
020 8732 7980



Redress & Client Money Protection :

Benham and Reeves are members of The Property Ombudsman redress scheme and have Client Money protection with ARLA Propertymark. You can find more information on our website at <https://www.benhams.com/membership/>

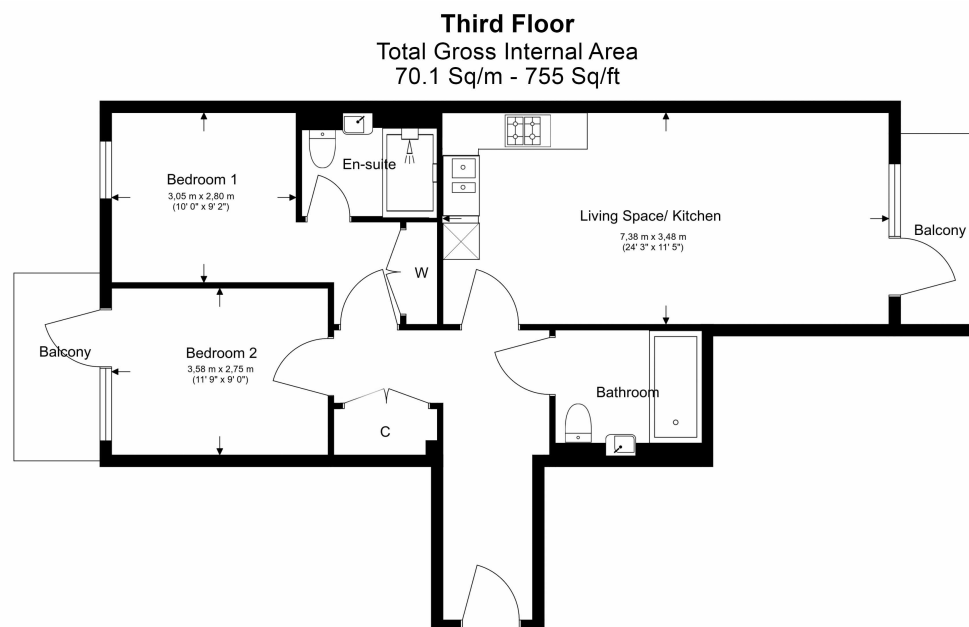
Benham & Reeves



Beaufort Square, Colindale , NW9

£430 per week, £1,863 per month + fees

www.benhams.com



Floor Plan measurements are approximate and are for illustrative purposes only. While we do not doubt the floor plans accuracy, we make no guarantee, warranty or representation as to the accuracy and completeness of the floor plan.

Score	Energy rating	Current	Potential
92+	A		
81-91	B		
69-80	C	80 c	80 c
55-68	D		
39-54	E		
21-38	F		
1-20	G		

London branches open six days a week Mon - Sat

Canary Wharf | City | Colindale | Dartmouth Park | Ealing | Fulham
Hammersmith | Hampstead | Highgate | Hyde Park | Kensington | Kew
Knightsbridge | Nine Elms | Shoreditch | Southall | Surrey Quays
Wapping | Wembley | White City | Woolwich

International offices

China | Hong Kong SAR | India | Indonesia | Qatar | Malaysia | Middle East | Pakistan
Singapore | South Africa | Thailand | Turkey



Benham & Reeves