



Benham & Reeves

Boulevard Drive, Colindale, NW9

£450 per week, £1,950 per month + fees

 2 Bedrooms  2 Bathrooms  Furnished

****ON SITE AGENT****

Contemporary, luxury 2nd floor apartment with secure underground parking with direct access to the building, and excellent onsite resident facilities. Located a short walk from Colindale Underground Station (Northern Line) EPC - C

****MORE PROPERTIES TO OFFER****

Please [click here](#) for full detail

Property features

Selection of Amenities On-site | Well Tended Communal Gardens | Private Terrace | Tastefully Furnished | Situated within Beaufort Park, Colindale NW9 | EPC-D | Water Rates Included | Secure Underground Unallocated Parking | Gym, Swimming Pool, Spa and Jacuzzi | 0.4 miles to Colindale Underground Station

For more information about this property, please call our Colindale branch on

020 8732 7980

Redress & Client Money Protection :

Benham and Reeves are members of The Property Ombudsman redress scheme and have Client Money protection with ARLA Propertymark. You can find more information on our website at <https://www.benhams.com/membership/>



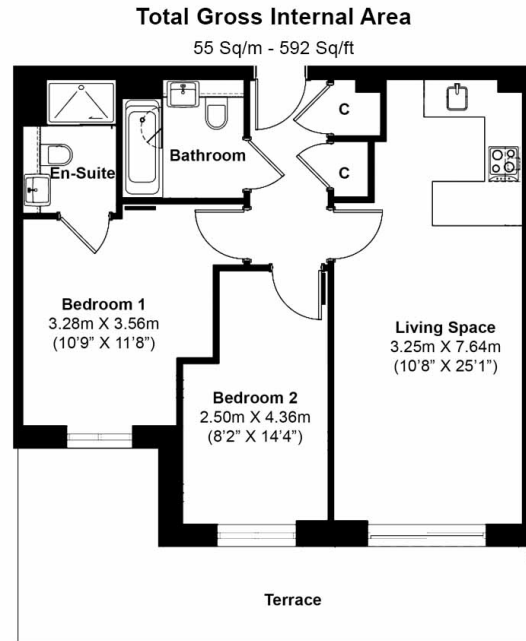
Benham & Reeves



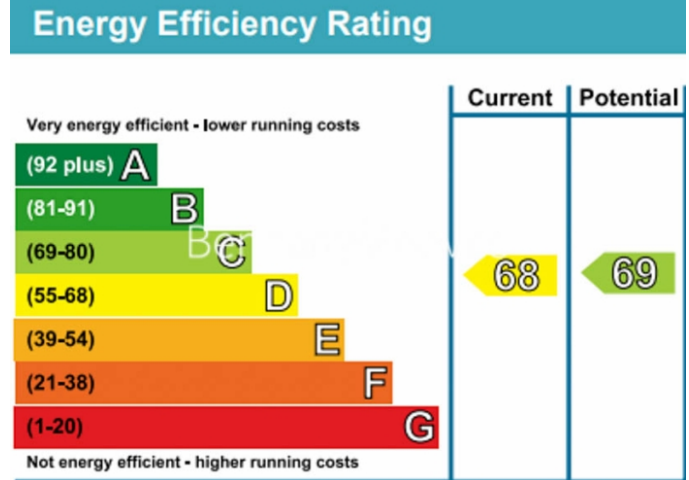
Boulevard Drive, Colindale, NW9

£450 per week, £1,950 per month + fees

www.benhams.com



Floor Plan measurements are approximate and are for illustrative purposes only. While we do not doubt the floor plans accuracy, we make no guarantee, warranty or representation as to the accuracy and completeness of the floor plan.



London branches open six days a week Mon - Sat

Canary Wharf | City | Colindale | Dartmouth Park | Ealing | Fulham
Hammersmith | Hampstead | Highgate | Hyde Park | Kensington | Kew
Knightsbridge | Nine Elms | Shoreditch | Southall | Surrey Quays
Wapping | Wembley | White City | Woolwich

International offices

China | Hong Kong SAR | India | Indonesia | Qatar | Malaysia | Middle East |
Singapore | South Africa | Thailand | Turkey



Benham & Reeves