



Benham & Reeves

## **Boulevard Drive, Colindale, NW9**

£738 per week, £3,200 per month + fees

 3 Bedrooms    2 Bathrooms    Furnished

STUNNING apartment offering a SPACIOUS open plan living area with a FULLY FITTED KITCHEN, 3 DOUBLE BEDROOMS, two bathrooms as well as an LARGE TERRACE and SECURE UNDERGROUND PARKING.

The property is also situated 0.4 miles to Colindale underground station (Northern Line)

Please [click here](#) for full detail

## Property features

**Selection of Amenities On-site | Sky and Internet Included | Private Balcony | Tastefully Furnished | Situated within Beaufort Park, Colindale NW9 | EPC-D | 24 Hour Estate Management | Secure Underground Unallocated Parking | Fee Gym, Swimming Pool, Spa and Jacuzzi | 0.4 miles to Colindale Underground Station**

For more information about this property,  
please call our Colindale branch on

**020 8732 7980**

Redress & Client Money Protection :

Benham and Reeves are members of The Property Ombudsman redress scheme and have Client Money protection with ARLA Propertymark. You can find more information on our website at <https://www.benhamandreeves.com/membership/>



**Benham & Reeves**

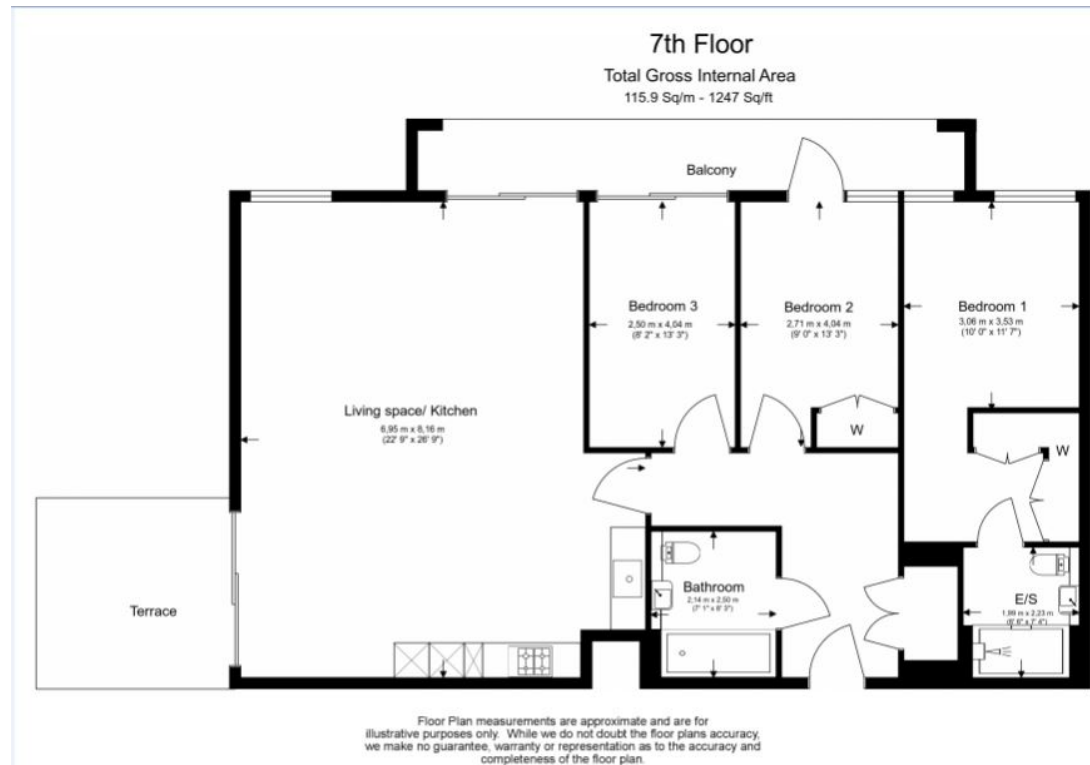




# Boulevard Drive, Colindale, NW9

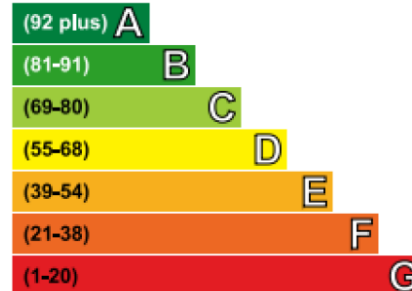
£738 per week, £3,200 per month + fees

[www.benhams.com](http://www.benhams.com)



## Energy Efficiency Rating

Very energy efficient - lower running costs



Not energy efficient - higher running costs

## London branches open six days a week Mon - Sat

Canary Wharf | City | Colindale | Dartmouth Park | Ealing | Fulham  
Hammersmith | Hampstead | Highgate | Hyde Park | Kensington | Kew  
Knightsbridge | Nine Elms | Shoreditch | Southall | Surrey Quays  
Wapping | Wembley | White City | Woolwich

## International offices

China | Hong Kong SAR | India | Indonesia | Qatar | Malaysia | Middle East | Pakistan  
Singapore | South Africa | Thailand | Turkey



Benham & Reeves