



Benham & Reeves

Boulevard Drive, Colindale, NW9

£381 per week, £1,650 per month + fees

 1 Bedroom  1 Bathroom  Furnished

Stylish 3rd floor Manhattan style apartment with secure underground parking and landscaped communal gardens in Beaufort Park, Colindale. Colindale Underground station (Northern Line) is approximately 5 minutes' walk away (0.4 miles).

Please [click here](#) for full detail

Property features

Selection of Amenities On-site | Well Tended Communal Gardens | Private Balcony | Tastefully Furnished | Situated within Beaufort Park, Colindale NW9 | EPC-C | Available to rent from the middle of April 2025 | 24 Hour Estate Management | Secure Underground Unallocated Parking | 0.4 miles to Colindale Underground Station

For more information about this property,
please call our Colindale branch on

020 8732 7980

Redress & Client Money Protection :

Benham and Reeves are members of The Property Ombudsman redress scheme and have Client Money protection with ARLA Propertymark. You can find more information on our website at <https://www.benhamandreeves.com/membership/>



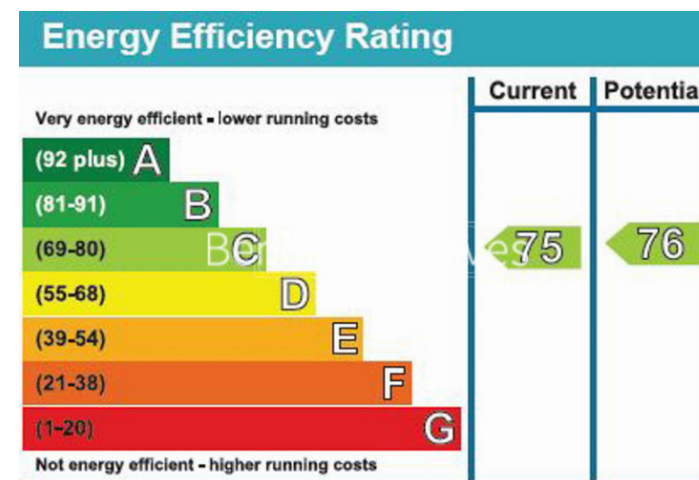
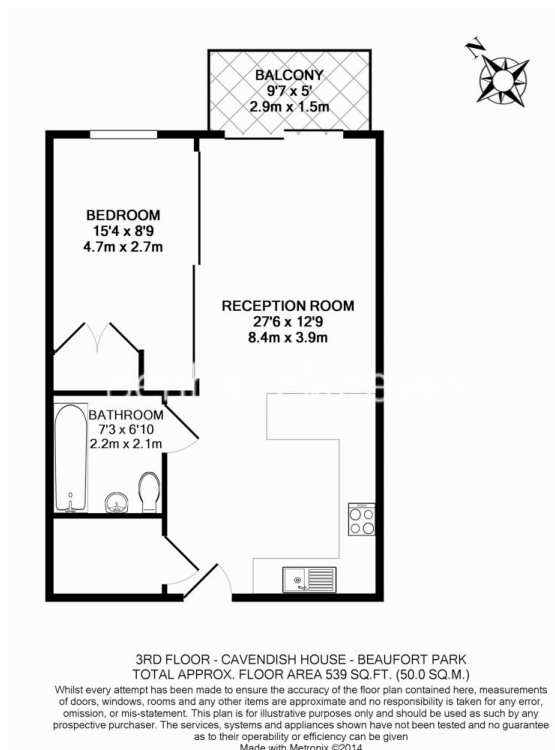
Benham&Reeves



Boulevard Drive, Colindale, NW9

£381 per week, £1,650 per month + fees

www.benhams.com



London branches open six days a week Mon - Sat

Canary Wharf | City | Colindale | Dartmouth Park | Ealing | Fulham
Hammersmith | Hampstead | Highgate | Hyde Park | Kensington | Kew
Knightsbridge | Nine Elms | Shoreditch | Southall | Surrey Quays
Wapping | Wembley | White City | Woolwich

International offices

China | Hong Kong SAR | India | Indonesia | Qatar | Malaysia | Middle East | Pakistan
Singapore | South Africa | Thailand | Turkey



Benham & Reeves