



Benham & Reeves

Boulevard Drive, Colindale, NW9

£692 per week, £3,000 per month + fees

 3 Bedrooms  2 Bathrooms  Furnished

Spacious 6th floor apartment with video entry situated within a sought-after development with stunning onsite amenities in North West also situated 0.4 miles to Colindale underground station (Northern Line) EPC - C

Please [click here](#) for full detail

Property features

Selection of amenities on site | Well tended communal gardens | Private balcony | Tastefully furnished | Situated within Beaufort Park development in Colindale NW9 | EPC- C | 24 Hours Estate Management | Under Ground parking | Free resident's gym, swimming pool, spa and jacuzzi | 0.4 miles to Colindale underground station

For more information about this property,
please call our Colindale branch on

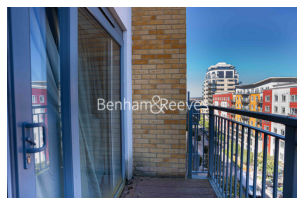
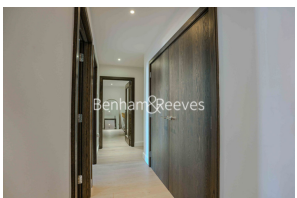
020 8732 7980

Redress & Client Money Protection :

Benham and Reeves are members of The Property Ombudsman redress scheme and have Client Money protection with ARLA Propertymark. You can find more information on our website at <https://www.benhams.com/membership/>



Benham & Reeves



Boulevard Drive, Colindale, NW9

£692 per week, £3,000 per month + fees

www.benhams.com

Score	Energy rating	Current	Potential
92+	A		
81-91	B		
69-80	C	73 C	74 C
55-68	D		
39-54	E		
21-38	F		
1-20	G		

London branches open six days a week Mon - Sat

Canary Wharf | City | Colindale | Dartmouth Park | Ealing | Fulham
Hammersmith | Hampstead | Highgate | Hyde Park | Kensington | Kew
Knightsbridge | Nine Elms | Shoreditch | Southall | Surrey Quays
Wapping | Wembley | White City | Woolwich

International offices

China | Hong Kong SAR | India | Indonesia | Qatar | Malaysia | Middle East | Pakistan
Singapore | South Africa | Thailand | Turkey

