



Benham&Reeves

Beaufort Park, Colindale, NW9

£320 per week, £1,387 per month + fees

 1 Bedroom  1 Bathroom  Furnished

****ON SITE AGENT****

Modern MANHATTAN STYLE apartment offering an OPEN PLAN living area with a FULLY FITTED KITCHEN leading onto a PRIVATE BALCONY, FREE RESIDENTS GYM & SPA and much more..

The property is also situated 0.4 miles to COLINDALE UNDERGROUND STATION (Northern Line) EPC -C

****MORE PROPERTIES TO OFFER****

Please [click here](#) for full detail

Property features

Selection of Amenities On-site | Well Tended Communal Gardens | Private Balcony | Tastefully Furnished | Situated within Beaufort Park, Colindale NW9 | EPC-C | 24 Hour Estate Management | Water Rates Included | Gym, Swimming Pool, Spa and Jacuzzi | 0.4 miles to Colindale Underground Station

For more information about this property,
please call our Colindale branch on

020 8732 7980

Redress & Client Money Protection :

Benham and Reeves are members of The Property Ombudsman redress scheme and have Client Money protection with ARLA Propertymark. You can find more information on our website at <https://www.benhams.com/membership/>



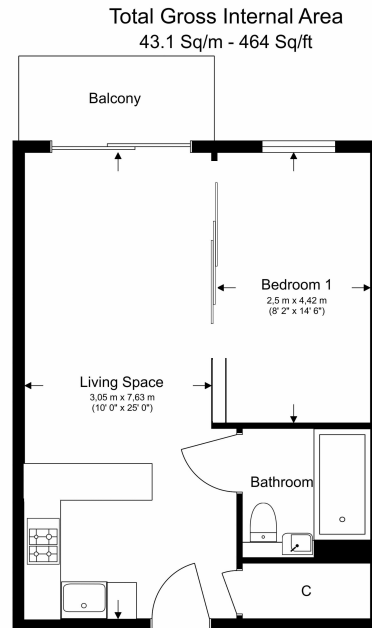
Benham & Reeves



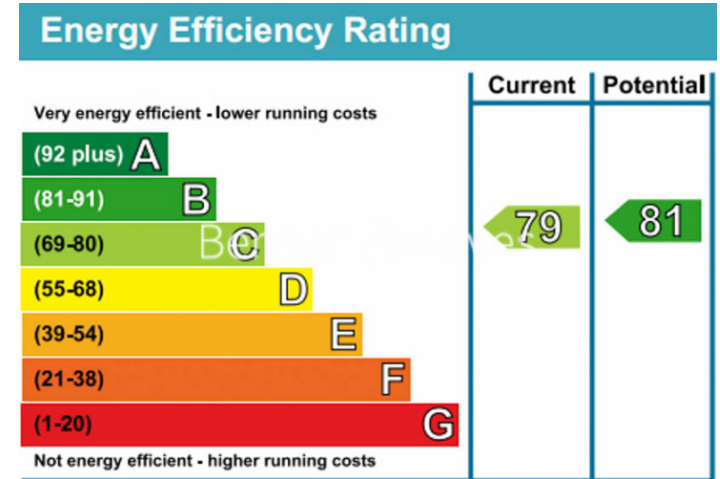
Beaufort Park, Colindale, NW9

£320 per week, £1,387 per month + fees

www.benhams.com



Floor Plan measurements are approximate and are for illustrative purposes only. While we do not doubt the floor plans accuracy, we make no guarantee, warranty or representation as to the accuracy and completeness of the floor plan.



London branches open six days a week Mon - Sat

Canary Wharf | City | Colindale | Dartmouth Park | Ealing | Fulham
Hammersmith | Hampstead | Highgate | Hyde Park | Kensington | Kew
Knightsbridge | Nine Elms | Shoreditch | Southall | Surrey Quays
Wapping | Wembley | White City | Woolwich

International offices

China | Hong Kong SAR | India | Indonesia | Qatar | Malaysia | Middle East |
Singapore | South Africa | Thailand | Turkey



Benham & Reeves