



Benham & Reeves

Beaufort Park, Colindale, NW9

£508 per week, £2,200 per month + fees

 2 Bedrooms  2 Bathrooms  Furnished

Modern spacious 3rd floor apartment with excellent security, onsite amenities, and parking, situated in a desirable development in North West London. Ideally located a short walk (0.4 miles) from Colindale Underground Station (Northern Line).

Please [click here](#) for full detail

Property features

Selection of Amenities On-site | Well Tended Communal Gardens | Private Balcony | Furnished | Situated within Beaufort Park, Colindale NW9 | EPC-C | 24 Hour Estate Management | Secure Underground Unallocated Parking | Fee Gym, Swimming Pool, Spa and Jacuzzi | 0.4 miles to Colindale Underground Station

For more information about this property,
please call our Colindale branch on

020 8732 7980

Redress & Client Money Protection :

Benham and Reeves are members of The Property Ombudsman redress scheme and have Client Money protection with ARLA Propertymark. You can find more information on our website at <https://www.benhamandreeves.com/membership/>



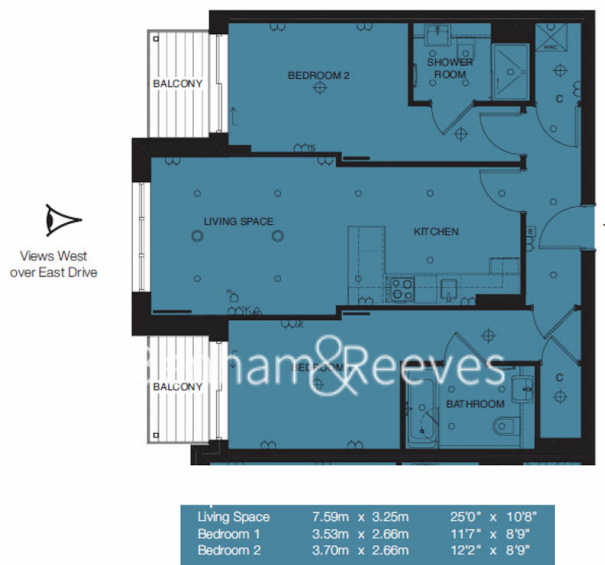
Benham & Reeves



Beaufort Park, Colindale, NW9

£508 per week, £2,200 per month + fees

www.benhamshams.com



Score	Energy rating	Current	Potential
92+	A		
81-91	B		81 B
69-80	C	78 c	
55-68	D		
39-54	E		
21-38	F		
1-20	G		

London branches open six days a week Mon - Sat

Canary Wharf | City | Colindale | Dartmouth Park | Ealing | Fulham
Hammersmith | Hampstead | Highgate | Hyde Park | Kensington | Kew
Knightsbridge | Nine Elms | Shoreditch | Southall | Surrey Quays
Wapping | Wembley | White City | Woolwich

International offices

China | Hong Kong SAR | India | Indonesia | Qatar | Malaysia | Middle East |
Singapore | South Africa | Thailand | Turkey



Benham & Reeves