



Benham & Reeves

Heritage Avenue, Colindale, NW9

£508 per week, £2,200 per month + fees

 2 Bedrooms  2 Bathrooms  Furnished

***ON SITE AGENT**

Spacious apartment, with video entry, automatic lifts, and private South facing balcony, situated in a desirable development with a host of excellent facilities and amenities Northwest London. Six minutes on foot from Colindale Underground Station (Northern Line). EPC-B

MORE PROPERTIES TO OFFER

"

Please [click here](#) for full detail

Property features

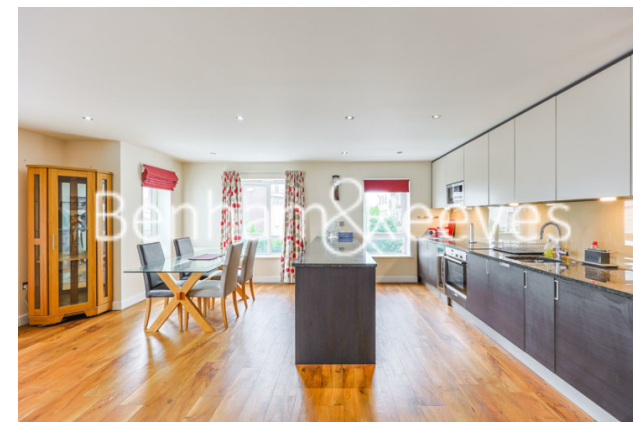
Selection of Amenities On-site | Well Tended Communal Gardens | Private Balcony | Furnished | Situated within Beaufort Park, Colindale NW9 | EPC-B | Available to rent Mid March | 24 Hour Estate Management | Secure Underground Unallocated Parking | 0.4 miles to Colindale Underground Station

For more information about this property,
please call our Colindale branch on

020 8732 7980

Redress & Client Money Protection :

Benham and Reeves are members of The Property Ombudsman redress scheme and have Client Money protection with ARLA Propertymark. You can find more information on our website at <https://www.benhamandreeves.com/membership/>



Benham & Reeves



Heritage Avenue, Colindale, NW9

£508 per week, £2,200 per month + fees

www.benhams.com

Score	Energy rating	Current	Potential
92+	A		
81-91	B	81 B	86 B
69-80	C		
55-68	D		
39-54	E		
21-38	F		
1-20	G		

London branches open six days a week Mon - Sat

Canary Wharf | City | Colindale | Dartmouth Park | Ealing | Fulham
Hammersmith | Hampstead | Highgate | Hyde Park | Kensington | Kew
Knightsbridge | Nine Elms | Shoreditch | Southall | Surrey Quays
Wapping | Wembley | White City | Woolwich

International offices

China | Hong Kong SAR | India | Indonesia | Qatar | Malaysia | Middle East |
Singapore | South Africa | Thailand | Turkey

