



Benham & Reeves

**Boulevard Drive, Colindale, NW9**

£508 per week, £2,201 per month + fees

 2 Bedrooms    2 Bathrooms    Furnished

**\*\*ON SITE AGENT\*\***

Modern 5th floor apartment, with secure underground parking with direct access to the building and a host of onsite resident amenities, situated in a desirable development in North West London.

The property is situated 0.4 miles to Colindale Underground Station (Northern Line) EPC - C

**\*\*MORE PROPERTIES TO OFFER\*\***

Please [click here](#) for full detail

## Property features

**Selection of Amenities On-site | Well Tended Communal Gardens | Private Balcony | Tastefully Furnished | Situated within Beaufort Park, Colindale NW9 | EPC-C | 24 Hour Estate Management | Secure Underground Unallocated Parking | Fee Gym, Swimming Pool, Spa and Jacuzzi | 0.4 miles to Colindale Underground Station**

For more information about this property,  
please call our Colindale branch on

**020 8732 7980**

Redress & Client Money Protection :

Benham and Reeves are members of The Property Ombudsman redress scheme and have Client Money protection with ARLA Propertymark. You can find more information on our website at <https://www.benhamandreeves.com/membership/>



**Benham & Reeves**

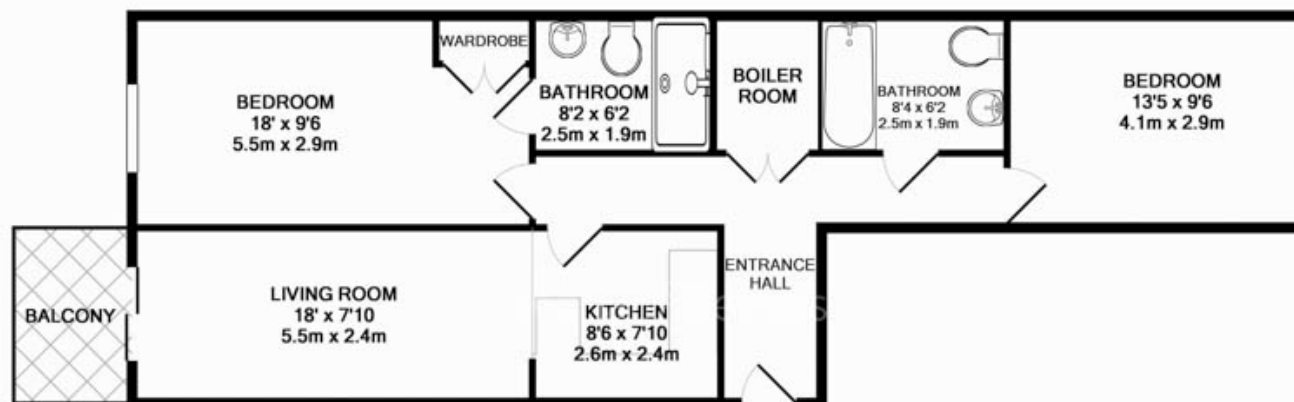




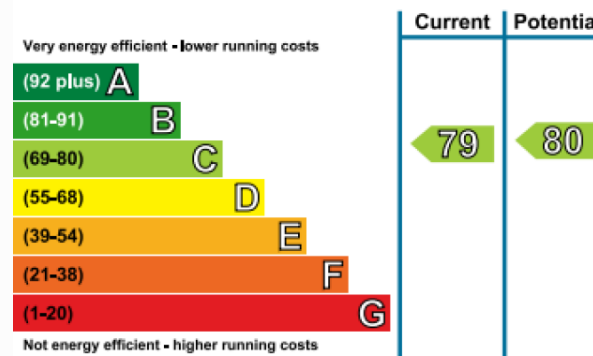
# Boulevard Drive, Colindale, NW9

£508 per week, £2,201 per month + fees

www.benhams.com



## Energy Efficiency Rating



30CH.NW9  
TOTAL APPROX. FLOOR AREA 746 SQ.FT. (69.3 SQ.M.)  
Whilst every attempt has been made to ensure the accuracy of the floor plan contained here, measurements of doors, windows, rooms and any other items are approximate and no responsibility is taken for any error, omission, or mis-statement. This plan is for illustrative purposes only and should be used as such by any prospective purchaser. The services, systems and appliances shown have not been tested and no guarantee as to their operability or efficiency can be given  
Made with Metropix ©2016

## London branches open six days a week Mon - Sat

Canary Wharf | City | Colindale | Dartmouth Park | Ealing | Fulham  
Hammersmith | Hampstead | Highgate | Hyde Park | Kensington | Kew  
Knightsbridge | Nine Elms | Shoreditch | Southall | Surrey Quays  
Wapping | Wembley | White City | Woolwich

## International offices

China | Hong Kong SAR | India | Israel | Malaysia | Middle East | Pakistan  
Qatar | Singapore | South Africa | Thailand | Turkey



Benham & Reeves