



Benham & Reeves

East Drive, Colindale, NW9

£369 per week, £1,599 per month + fees

 1 Bedroom  1 Bathroom  Furnished

*****ON SITE AGENT**

Stylish 4th floor Manhattan style apartment situated in a desirable development with a host of onsite amenities in North West London. Perfectly located 0.4 miles from Colindale Underground Station (Northern Line) - EPC - C

****MORE PROPERTIES TO OFFER****

Please [click here](#) for full detail

Property features

Selection of Amenities On-site | Well Tended Communal Gardens | Private Balcony | Tastefully Furnished | Situated within Beaufort Park, Colindale NW9 | EPC-C | 24 Hour Estate Management | Secure Underground Unallocated Parking | Fee Gym, Swimming Pool, Spa and Jacuzzi | 0.4 miles to Colindale Underground Station

For more information about this property,
please call our Property Management branch on

020 7319 9740

Redress & Client Money Protection :

Benham and Reeves are members of The Property Ombudsman redress scheme and have Client Money protection with ARLA Propertymark. You can find more information on our website at <https://www.benhamandreeves.com/membership/>



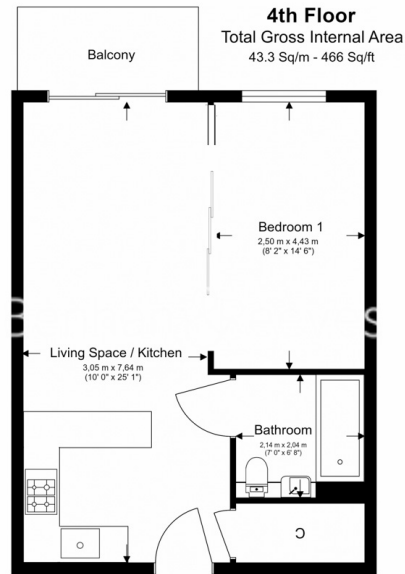
Benham & Reeves



East Drive, Colindale, NW9

£369 per week, £1,599 per month + fees

www.benhams.com



Floor Plan measurements are approximate and are for illustrative purposes only. While we do not doubt the floor plan accuracy we make no guarantee, warranty or representation as to the accuracy and completeness of the floor plan.

Score	Energy rating	Current	Potential
92+	A		
81-91	B		81 B
69-80	C	79 C	
55-68	D		
39-54	E		
21-38	F		
1-20	G		

London branches open six days a week Mon - Sat

Canary Wharf | City | Colindale | Dartmouth Park | Ealing | Fulham
Hammersmith | Hampstead | Highgate | Hyde Park | Kensington | Kew
Knightsbridge | Nine Elms | Shoreditch | Southall | Surrey Quays
Wapping | Wembley | White City | Woolwich

International offices

China | Hong Kong SAR | India | Indonesia | Qatar | Malaysia | Middle East |
Singapore | South Africa | Thailand | Turkey



Benham & Reeves